

bs-9553R**[Primary Antibody]****RTL8C Rabbit pAb****Bioss**
ANTIBODIES

www.bioss.com.cn

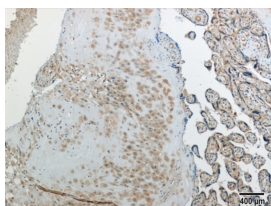
sales@bioss.com.cn

techsupport@bioss.com.cn

400-901-9800

— DATASHEET —

Host: Rabbit	Isotype: IgG	Applications: IHC-P (1:100-500) IHC-F (1:100-500) IF (1:100-500)
Clonality: Polyclonal		
GeneID: 8933	SWISS: A6ZKI3	
Target: RTL8C		
Immunogen: KLH conjugated synthetic peptide derived from human Retrotransposon Gag-like protein 8C: 11-113/113.		
Purification: affinity purified by Protein A		Reactivity: Human (predicted: Mouse, Rat, Pig, Cow, Dog, Horse)
Concentration: 1mg/ml		
Storage: 0.01M TBS (pH7.4) with 1% BSA, 0.02% Proclin300 and 50% Glycerol. Shipped at 4°C. Store at -20°C for one year. Avoid repeated freeze/thaw cycles.		Predicted MW.: 13 kDa
Background: RTL8C (Retrotransposon Gag Like 8C) is a Protein Coding gene. An important paralog of this gene is RTL8A.		Subcellular Location: Cell membrane

— VALIDATION IMAGES —

This image was generously provided by Drs. Reiner Strick and Christine Henke at the University-Clinic Erlangen. Human placenta labeled with Rabbit Anti-Cerebral protein 5 Polyclonal Antibody, Unconjugated (bs-9553R) at 1:250. Positive and specific expression was found in the placenta bed with extravillous trophoblasts (left part) and partly with villi including syncytiotrophoblasts and endothelial cells (right part).

— SELECTED CITATIONS —

- **[IF=4.77]** Henke, Christine, et al. "Selective expression of sense and antisense transcripts of the sushi-ichi-related retrotransposon-derived family during mouse placentogenesis." *Retrovirology* 12.1 (2015): 1-17. WB ;="Mouse". 25888968