

**bs-9869R****[ Primary Antibody ]****Bioss**  
ANTIBODIES

www.bioss.com.cn

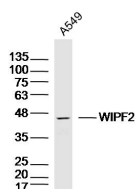
sales@bioss.com.cn

techsupport@bioss.com.cn

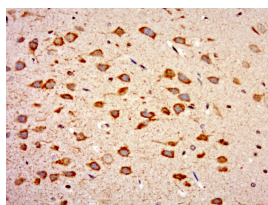
400-901-9800

**WIPF2 Rabbit pAb****— DATASHEET —**

<b>Host:</b> Rabbit	<b>Isotype:</b> IgG	<b>Applications:</b> <b>WB</b> (1:500-2000) <b>IHC-P</b> (1:100-500) <b>IHC-F</b> (1:100-500) <b>IF</b> (1:50-200)  <b>Reactivity:</b> Human, Rat (predicted: Mouse, Pig, Dog)  <b>Predicted MW.:</b> 46 kDa  <b>Subcellular Location:</b> Cytoplasm
<b>Clonality:</b> Polyclonal		
<b>GeneID:</b> 147179	<b>SWISS:</b> Q8TF74	
<b>Target:</b> WIPF2		
<b>Immunogen:</b> KLH conjugated synthetic peptide derived from human WIPF2: 31-130/440.		
<b>Purification:</b> affinity purified by Protein A		
<b>Concentration:</b> 1mg/ml		
<b>Storage:</b> 0.01M TBS (pH7.4) with 1% BSA, 0.02% Proclin300 and 50% Glycerol. Shipped at 4°C. Store at -20°C for one year. Avoid repeated freeze/thaw cycles.		
<b>Background:</b> WIRE, also known as WIPF2 (WAS/WASL interacting protein family, member 2) or WICH, is a 440 amino acid protein that localizes to both the cytoplasm and the cytoskeleton and contains one WH2 domain. Expressed ubiquitously with highest expression in colon, brain, lung and stomach, WIRE functions as an N-WASP-interacting protein that plays an important role in the organization and mobilization of the Actin cytoskeleton. Additionally, WIRE is involved in the formation of cell surface protrusions and may also provide a link between the cytoskeletal machinery and PDGF-B receptors. Multiple alternatively spliced isoforms of WIRE exist and are encoded by a gene that maps to human chromosome 17.		

**— VALIDATION IMAGES —**

Sample: A549 Cell (Human) Lysate at 30 ug  
Primary: Anti- WIPF2 (bs-9869R) at 1/300 dilution  
Secondary: IRDye800CW Goat Anti-Rabbit IgG at 1/20000 dilution Predicted band size: 46kD  
Observed band size: 46kD



Paraformaldehyde-fixed, paraffin embedded (rat brain); Antigen retrieval by boiling in sodium citrate buffer (pH6.0) for 15min; Block endogenous peroxidase by 3% hydrogen peroxide for 20 minutes; Blocking buffer (normal goat serum) at 37°C for 30min; Antibody incubation with (WIPF2) Polyclonal Antibody, Unconjugated (bs-9869R) at 1:500 overnight at 4°C, followed by a conjugated secondary (sp-0023) for 20 minutes and DAB staining