

bs-9802R**[Primary Antibody]****C1orf80 Rabbit pAb****BioSS**
ANTIBODIES

www.bioss.com.cn

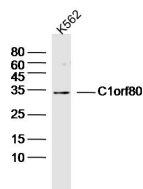
sales@bioss.com.cn

techsupport@bioss.com.cn

400-901-9800

— DATASHEET —

Host: Rabbit	Isotype: IgG	Applications: WB (1:500-2000)
Clonality: Polyclonal		
GeneID: 64853	SWISS: Q96BJ3	
Target: C1orf80		
Immunogen: KLH conjugated synthetic peptide derived from human C1orf180/AIDA: 221-306/306.		
Purification: affinity purified by Protein A		
Concentration: 1mg/ml		
Storage: 0.01M TBS (pH7.4) with 1% BSA, 0.02% Proclin300 and 50% Glycerol. Shipped at 4°C. Store at -20°C for one year. Avoid repeated freeze/thaw cycles.		Reactivity: Human (predicted: Mouse, Rat, Pig, Cow, Chicken, Dog, Horse)
Background: AIDA, also known as C1orf80, is a 306 amino acid protein that belongs to the axin interactor family. Expressed in a variety of tissues, including skeletal muscle and heart, AIDA functions as a ventralizing factor during embryogenesis, disrupting Axin homodimerization and inhibiting Axin-mediated JNK activation. Axin, a scaffold protein, is important for both JNK signaling and the canonical Wnt pathway, two processes that play an essential role in embryonic dorsoventral patterning. Disruption of Axin by AIDA results in the negative regulation of JNK and Wnt signaling, thereby affecting embryonic developmental events. Three isoforms of AIDA exist due to alternative splicing events.		Predicted MW.: 35 kDa
		Subcellular Location: Cytoplasm ,Nucleus

— VALIDATION IMAGES —

Sample: K562 Cell (Human) Lysate at 40 ug
Primary: Anti-C1orf80 (bs-9802R) at 1/300
dilution Secondary: IRDye800CW Goat Anti-Rabbit IgG at 1/20000 dilution Predicted band size: 35 kD Observed band size: 34 kD