

bs-33535R**[Primary Antibody]**

Histone H1.0 Rabbit pAb

BioSS
ANTIBODIES

www.bioss.com.cn

sales@bioss.com.cn

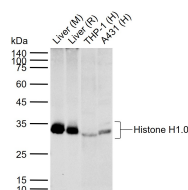
techsupport@bioss.com.cn

400-901-9800

— DATASHEET —

Host: Rabbit	Isotype: IgG	Applications: WB (1:500-2000) ELISA (1:5000-10000)
Clonality: Polyclonal		Reactivity: Human, Mouse, Rat
GeneID: 3005	SWISS: P07305	
Target: Histone H1.0		
Immunogen: KLH conjugated synthetic peptide derived from human Histone H1.0: 51-150/194.		
Purification: affinity purified by Protein A		
Concentration: 1mg/ml		Predicted MW.: 21 kDa
Storage: 0.01M TBS (pH7.4) with 1% BSA, 0.02% Proclin300 and 50% Glycerol. Shipped at 4°C. Store at -20°C for one year. Avoid repeated freeze/thaw cycles.		Subcellular Location: Cytoplasm ,Nucleus
Background: Histones are basic nuclear proteins that are responsible for the nucleosome structure of the chromosomal fiber in eukaryotes. Nucleosomes consist of approximately 146 bp of DNA wrapped around a histone octamer composed of pairs of each of the four core histones (H2A, H2B, H3, and H4). The chromatin fiber is further compacted through the interaction of a linker histone, H1, with the DNA between the nucleosomes to form higher order chromatin structures. This gene is intronless and encodes a replication-independent histone that is a member of the histone H1 family. [provided by RefSeq, Oct 2015]		

— VALIDATION IMAGES —



Sample: Lane 1: Mouse Liver tissue lysates Lane 2: Rat Liver tissue lysates Lane 3: Human THP-1 cell lysates Lane 4: Human A431 cell lysates
Primary: Anti-Histone H1.0 (bs-33535R) at 1/1000 dilution Secondary: IRDye800CW Goat Anti-Rabbit IgG at 1/20000 dilution Predicted band size: 21 kDa Observed band size: 32 kDa