

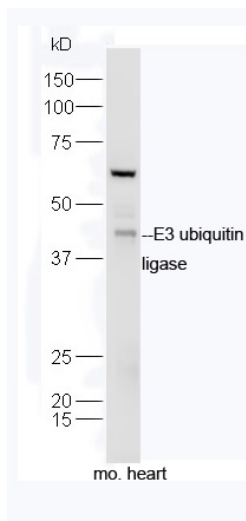
---

## E3 ubiquitin ligase Rabbit pAb

Catalog Number: bs-9663R  
Target Protein: E3 ubiquitin ligase  
Concentration: 1mg/ml  
Form: Liquid  
Host: Rabbit  
Clonality: Polyclonal  
Isotype: IgG  
Applications: WB (1:500-2000)  
Reactivity: Mouse (predicted:Human, Rat, Rabbit, Pig)  
Predicted MW: 40 kDa  
Subcellular: Cell membrane ,Cytoplasm  
Locations:  
Entrez Gene: 79594  
Swiss Prot: Q969V5  
Source: KLH conjugated synthetic peptide derived from human E3 ubiquitin ligase/RNF218: 51-150/352.  
Purification: affinity purified by Protein A  
Storage: 0.01M TBS (pH7.4) with 1% BSA, 0.02% Proclin300 and 50% Glycerol.  
Shipped at 4°C. Store at -20°C for one year. Avoid repeated freeze/thaw cycles.  
Background: E3 ubiquitin-protein ligase that plays a role in the control of mitochondrial morphology. Promotes mitochondrial fragmentation and influences mitochondrial localization. Inhibits cell growth. When overexpressed, activates JNK through MAP3K7/TAK1 and induces caspase-dependent apoptosis. E3 ubiquitin ligases accept ubiquitin from an E2 ubiquitin-conjugating enzyme in the form of a thioester and then directly transfer the ubiquitin to targeted substrates.

### VALIDATION IMAGES

---



Sample: Heart (Mouse) Lysate at 40 ug Primary: Anti- E3 ubiquitin ligase (bs-9663R) at 1/300 dilution  
Secondary: HRP conjugated Goat-Anti-rabbit IgG (bs-0295G-HRP) at 1/5000 dilution Predicted band size: 40  
kD Observed band size: 40 kD