

bs-8476R**[Primary Antibody]****FBXL21 Rabbit pAb****BioSS**
ANTIBODIES

www.bioss.com.cn

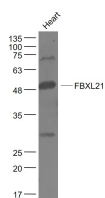
sales@bioss.com.cn

techsupport@bioss.com.cn

400-901-9800

— DATASHEET —

Host: Rabbit	Isotype: IgG	Applications: WB (1:500-2000)
Clonality: Polyclonal		Reactivity: Mouse (predicted: Human, Rat, Sheep, Cow, Dog)
GeneID: 26223	SWISS: Q9UKT6	
Target: FBXL21		Predicted MW.: 49 kDa
Immunogen: KLH conjugated synthetic peptide derived from human FBXL21/FBL3B: 121-220/300.		Subcellular Location: Cytoplasm ,Nucleus
Purification: affinity purified by Protein A		
Concentration: 1mg/ml		
Storage: 0.01M TBS (pH7.4) with 1% BSA, 0.02% Proclin300 and 50% Glycerol. Shipped at 4°C. Store at -20°C for one year. Avoid repeated freeze/thaw cycles.		
Background: FBL3B is a 434 amino acid protein encoded by the human gene FBXL21. FBL3B contains one 40 amino acid F-box region, making it a member of the F-box family. FBL3B also contains three LRR (leucine-rich) repeats. F-box proteins are critical components of the SCF (Skp1-CUL-1-F-box protein) type E3 ubiquitin ligase complex and are involved in substrate recognition and recruitment for ubiquitination. F-box proteins are members of a large family that regulates cell cycle, immune response, signaling cascades and developmental programs by targeting proteins, such as cyclins, cyclin-dependent kinase inhibitors, I κ B- α and b-catenin, for degradation by the proteasome after ubiquitination. FBL3B is a substrate-recognition component of the SCF complex that interacts with Skp1 p19 and CUL-1. FBL3B is also associated with expression and regulation of circadian and cryptochrome proteins.		

— VALIDATION IMAGES —

Sample: Heart (Mouse) Lysate at 40 ug Primary:

Anti- FBXL21 (bs-8476R) at 1/1000 dilution

Secondary: IRDye800CW Goat Anti-Rabbit IgG at

1/20000 dilution Predicted band size: 49 kD

Observed band size: 49 kD