

bs-8470R**[Primary Antibody]****FBXO36 Rabbit pAb****Bioss**
ANTIBODIES

www.bioss.com.cn

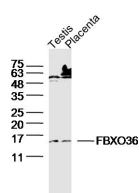
sales@bioss.com.cn

techsupport@bioss.com.cn

400-901-9800

— DATASHEET —

Host: Rabbit	Isotype: IgG	Applications: WB (1:500-2000)
Clonality: Polyclonal		Reactivity: Mouse (predicted: Human, Rat, Sheep, Cow, Dog, Horse)
GeneID: 130888		Predicted MW.: 22 kDa
Target: FBXO36		Subcellular Location: Cytoplasm
Immunogen: KLH conjugated synthetic peptide derived from human FBXO36: 1-100/188.		
Purification: affinity purified by Protein A		
Concentration: 1mg/ml		
Storage: 0.01M TBS (pH7.4) with 1% BSA, 0.02% Proclin300 and 50% Glycerol. Shipped at 4°C. Store at -20°C for one year. Avoid repeated freeze/thaw cycles.		
Background: FBXO36 is a 188 amino acid protein that contains one forty amino acid F-box region, making it a member of the F-box family. F-box proteins are critical components of the SCF (Skp1-CUL-1-F-box protein) type E3 ubiquitin ligase complex and are involved in substrate recognition and recruitment for ubiquitination. F-box proteins are members of a large family that regulates cell cycle, immune response, signaling cascades and developmental programs by targeting proteins, such as cyclins, cyclin-dependent kinase inhibitors, I κ B- α and β -catenin, for degradation by the proteasome after ubiquitination. Functioning as a component of the SCF complex, FBXO36 is thought to recognize and bind to select phosphorylated proteins, thereby promoting their ubiquitination and subsequent degradation.		

— VALIDATION IMAGES —

Sample: Testis (mouse) Lysate at 40 ug placenta (mouse) Lysate at 40 ug
Primary: Anti-FBXO36(bs-8470R) at 1/300 dilution
Secondary: IRDye800CW Goat Anti-Rabbit IgG at 1/20000 dilution
Predicted band size: 22kD
Observed band size: 16 kD