

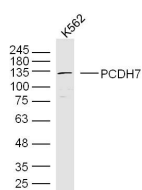
bs-20154R**[Primary Antibody]****BioSS**
ANTIBODIES

www.bioss.com.cn

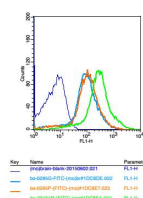
sales@bioss.com.cn

techsupport@bioss.com.cn

400-901-9800

PCDH7 Rabbit pAb**— DATASHEET —****Host:** Rabbit**Isotype:** IgG**Clonality:** Polyclonal**GeneID:** 5099**SWISS:** O60245**Target:** PCDH7**Immunogen:** KLH conjugated synthetic peptide derived from human PCDH7: 31-130/1069.**Purification:** affinity purified by Protein A**Concentration:** 1mg/ml**Storage:** Preservative: 0.02% Proclin300, Constituents: 1% BSA, 0.01M PBS, pH7.4.
Shipped at 4°C. Store at -20°C for one year. Avoid repeated freeze/thaw cycles.**Background:** As a subfamily of the cadherin superfamily, protocadherins are cadherin-like cell adhesion proteins that contain up to seven extracellular domains and are predominantly expressed in the nervous system. Importantly, the adhesion mechanism of protocadherins is distinct from classic cadherins. Through inactivation or overexpression, several protocadherins have been implicated in a variety of cancers. PCDH7 (protocadherin 7), also known as BHPCDH or BH-Pcdh, is a 1069 amino acid single-pass I membrane protein that is expressed in the brain and heart. Containing seven cadherin domains, PCDH7 is thought to function in cell-cell recognition and adhesion. PCDH7 exists as three isoforms due to alternative splicing events.**Applications:** WB (1:500-2000)**Flow-Cyt** (2µg/Test)**Reactivity:** Human, Mouse
(predicted: Rat, Pig, Sheep, Cow)**Predicted MW.:** 113 kDa**Subcellular Location:** Cell membrane**— VALIDATION IMAGES —**

Sample: K562(human)cell Lysate at 40 ug
 Primary: Anti-PCDH7 (bs-20154R) at 1/300
 dilution Secondary: IRDye800CW Goat Anti-
 Rabbit IgG at 1/20000 dilution Predicted band
 size: 113 kD Observed band size: 133 kD



Concentration: 2ug/10⁶ cells, Positive control:
 Mouse brain cells.