

**bsm-50258M****[ Primary Antibody ]****Bioss**  
ANTIBODIES

www.bioss.com.cn

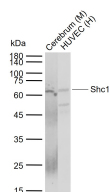
sales@bioss.com.cn

techsupport@bioss.com.cn

400-901-9800

**Shc1 Mouse mAb****— DATASHEET —**

<b>Host:</b> Mouse	<b>Isotype:</b> IgG	<b>Applications:</b> <b>WB</b> (1:100-1000) <b>IHC-P</b> (1:100-500) <b>IHC-F</b> (1:400-800) <b>IF</b> (1:50-500)  <b>Reactivity:</b> Human, Mouse (predicted: Rat)  <b>Predicted MW.:</b> 63 kDa  <b>Subcellular Location:</b> Cytoplasm
<b>Clonality:</b> Monoclonal	<b>CloneNo.:</b> 47F4	
<b>GeneID:</b> 6464	<b>SWISS:</b> P29353	
<b>Target:</b> Shc1		
<b>Concentration:</b> 1mg/ml		
<b>Storage:</b> 0.01M TBS (pH7.4) with 1% BSA, 0.02% Proclin300. Store at 2-8°C for one year. Avoid repeated freeze/thaw cycles.		
<b>Background:</b> This gene encodes three main isoforms that differ in activities and subcellular location. While all three are adapter proteins in signal transduction pathways, the longest (p66Shc) may be involved in regulating life span and the effects of reactive oxygen species. The other two isoforms, p52Shc and p46Shc, link activated receptor tyrosine kinases to the Ras pathway by recruitment of the GRB2/SOS complex. p66Shc is not involved in Ras activation. Unlike the other two isoforms, p46Shc is targeted to the mitochondrial matrix. Several transcript variants encoding different isoforms have been found for this gene. [provided by RefSeq, Feb 2011]		

**— VALIDATION IMAGES —**

Sample: Lane 1: Mouse Cerebrum tissue lysates  
Lane 2: Human HUVEC cell lysates Primary: Anti-Shc1 (bsm-50258M) at 1/200 dilution Secondary: IRDye800CW Goat Anti-Mouse IgG at 1/20000 dilution Predicted band size: 63 kDa Observed band size: 63 kDa

**— SELECTED CITATIONS —**

- **[IF=4.9]** Magdalena Lebiecinska-Arciszewska. et al. Distribution of the p66Shc Adaptor Protein Among Mitochondrial and Mitochondria—Associated Membranes Fractions in Normal and Oxidative Stress Conditions. INT J MOL SCI. 2024 Jan;25(23):12835 IP ;Mouse. 39684546