

bsm-52568R

[Primary Antibody]

HES1 Recombinant Rabbit mAb

Bioss
ANTIBODIES

www.bioss.com.cn

sales@bioss.com.cn

techsupport@bioss.com.cn

400-901-9800

DATASHEET

Host: Rabbit

Clonality: Recombinant

GeneID: 3280

Target: HES1

Immunogen: A synthesized peptide derived from human HES1: 200-280/280.

Purification: affinity purified by Protein A

Concentration: 1mg/ml

Storage: 0.01M TBS (pH7.4) with 1% BSA, 0.02% Proclin300 and 50% Glycerol.
Shipped at 4°C. Store at -20°C for one year. Avoid repeated freeze/thaw cycles.

Background: Transcriptional repressor of genes that require a bHLH protein for their transcription. May act as a negative regulator of myogenesis by inhibiting the functions of MYOD1 and ASH1. Binds DNA on N-box motifs: 5'-CACNAG-3' with high affinity and on E-box motifs: 5'-CANNTG-3' with low affinity.

Isotype: IgG

CloneNo.: 6E11

SWISS: Q14469

Applications: WB (1:500-2000)

IHC-P (1:100-500)

IHC-F (1:100-500)

IF (1:100-500)

Flow-Cyt (1 μ g/Test)

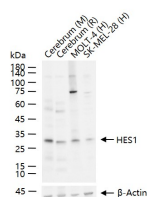
ICC/IF (1:50-200)

Reactivity: Human, Mouse, Rat

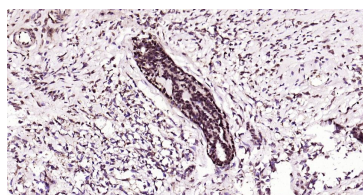
Predicted MW.: 30 kDa

Subcellular Location: Nucleus

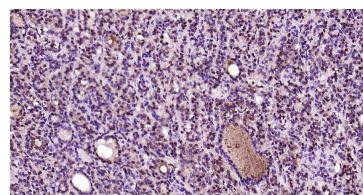
VALIDATION IMAGES



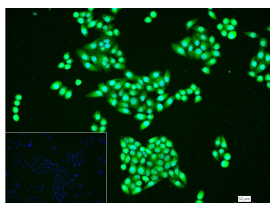
25 μ g total protein per lane of various lysates (see on figure) probed with HES1 monoclonal antibody, unconjugated (bsm-52568R) at 1:2000 dilution and 4°C overnight incubation. Followed by conjugated secondary antibody incubation at r.t. for 60 min.



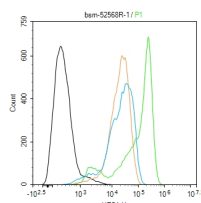
Paraformaldehyde-fixed, paraffin embedded Human Breast Cancer; Antigen retrieval by boiling in sodium citrate buffer (pH6.0) for 15 min; Antibody incubation with HES1 Monoclonal Antibody, Unconjugated(bsm-52568R) at 1:200 overnight at 4°C, followed by conjugation to the bs-0295G-HRP and DAB (C-0010) staining.



Paraformaldehyde-fixed, paraffin embedded Human Thyroid Gland; Antigen retrieval by boiling in sodium citrate buffer (pH6.0) for 15 min; Antibody incubation with HES1 Monoclonal Antibody, Unconjugated(bsm-52568R) at 1:200 overnight at 4°C, followed by conjugation to the bs-0295G-HRP and DAB (C-0010) staining.



4% Paraformaldehyde-fixed MCF-7 (H) cell; Triton X-100 at r.t. for 20 min; Antibody incubation with (HES1) monoclonal Antibody, unconjugated (bsm-52568R) 1:100, 90 min at 37°C; followed by conjugated Goat Anti-Rabbit IgG antibody (green, bs-40295G-FITC) at 37°C for 90 min, DAPI (blue, C02-04002) was used to stain the cell nuclei. PBS instead of the primary antibody was used as the blank control.



The MCF-7 (H) cells were fixed with 4% PFA (10 min at r.t.) and then permeabilized with 90% ice-cold methanol for 20 min at -20°C, the cells then were incubated in 5%BSA to block non-specific protein-protein interactions (30 min at r.t.). Primary Antibody (green): Rabbit Anti-HES1 antibody (bsm-52568R): 1 μ g/10⁶ cells; Secondary Antibody (white blue): Goat anti-Rabbit IgG-FITC (bs-40295G-FITC): 1 μ g/test. Isotype Control (orange): Rabbit IgG (bs-0295P). Blank control (black): PBS. Acquisition of 20,000 events was performed.

Important Note: This product as supplied is intended for research use only, not for use in human, therapeutic or diagnostic applications.

— SELECTED CITATIONS —

- **[IF=4.5]** Lanping Zhu. et al. Clostridium butyricum ameliorates indomethacin-induced enteropathy by promoting MUC2 secretion via suppressing the Notch pathway. FRONT MICROBIOL. 2025 Mar;16: IF ;Mouse. 40177488
- **[IF=3.1]** Miao Xiao. et al. Unbalanced occlusal loading elicited remodeling responses in growing rat temporomandibular joints and Notch1/Hes1 signaling pathway expression. BMC ORAL HEALTH. 2025 Feb;25:267 IHC,IF ;Rat. 39972323