

bsm-41630M**[Primary Antibody]****SARS-CoV-2 (2019-nCoV) Spike S1 Mouse mAb****BioSS**
ANTIBODIES

www.bioss.com.cn

sales@bioss.com.cn

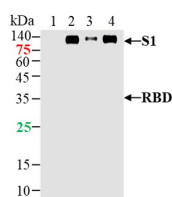
techsupport@bioss.com.cn

400-901-9800

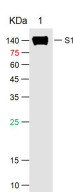
— DATASHEET —**Host:** Mouse**Isotype:** IgG1**Clonality:** Monoclonal**CloneNo.:** 6H6**Target:** SARS-CoV-2 (2019-nCoV) Spike S1**Immunogen:** Recombinant SARS-CoV-2 Spike S1 Protein: 14-685/1213.**Purification:** affinity purified by Protein A**Concentration:** Lot Dependent

Storage: Size : 100ug
0.01M PBS (pH7.4).
Size : 200ug (PBS only)
0.01M PBS
Shipped at 4°C. Store at -20°C for one year. Avoid repeated freeze/thaw cycles.

Background: The SARS-CoV-2 spike (S) protein is the target of vaccine design efforts to end the COVID-19 pandemic. Despite a low mutation rate, isolates with the D614G substitution in the S protein appeared early during the pandemic, and are now the dominant form worldwide. Here, we analyze the D614G mutation in the context of a soluble S ectodomain construct.

Applications: WB (1:500-2000)**Reactivity:** Mouse, Virus, SARS-CoV-2**Predicted MW.:** 140 kDa**— VALIDATION IMAGES —**

Sample: Lane 1: SARS-CoV-2 Spike RBD Protein(WT) at 500ng Lane 2: SARS-CoV-2 Spike S1 Protein(E484Q, L452R, D614G, P681R) at 500ng Lane 3: SARS-CoV-2 Spike S1 Protein (D80A, D215G, del241/243, K417N, E484K, N501Y, D614G) at 500ng Lane 4: SARS-CoV-2 Spike S1 Protein (L18F, T20N, P26S, D138Y, R190S, K417T, E484K, N501Y, D614G, H655Y) at 500ng Primary: Anti- SARS-CoV-2 Spike S1 Protein at 1/1000 dilution Secondary: IRDye800CW Goat Anti-Mouse IgG at 1/20000 dilution Predicted band size: 27kDa / 77.2 kDa Observed band size: 35kDa / 114 kDa



Sample: Lane 1: SARS-CoV-2 S1 Protein (His-Avi, HEK293) at 500ng Primary: Mouse Anti-SARS-CoV-2 Spike S1 Protein Antibody at 1/1000 dilution Secondary: IRDye800CW Goat Anti-Mouse IgG at 1/20000 dilution Predicted band size: 78kD Observed band size: kD