

**bsm-54421R**

**[ Primary Antibody ]**

## SUN2 Recombinant Rabbit mAb

**Bioss**  
ANTIBODIES

www.bioss.com.cn

sales@bioss.com.cn

techsupport@bioss.com.cn

400-901-9800

### — DATASHEET —

**Host:** Rabbit

**Isotype:** IgG

**Clonality:** Recombinant

**GeneID:** 25777

**Target:** SUN2

**Purification:** affinity purified by Protein A

**Concentration:** 1mg/ml

**Storage:** 0.01M TBS (pH7.4) with 1% BSA, 0.02% Proclin300 and 50% Glycerol.  
Shipped at 4°C. Store at -20°C for one year. Avoid repeated freeze/thaw cycles.

**Background:** SUN1 (MIM 607723) and SUN2 are inner nuclear membrane (INM) proteins that play a major role in nuclear-cytoplasmic connection by formation of a 'bridge' across the nuclear envelope, known as the LINC complex, via interaction with the conserved luminal KASH domain of nesprins (e.g., SYNE1; MIM 608441) located in the outer nuclear membrane (ONM). The LINC complex provides a direct connection between the nuclear lamina and the cytoskeleton, which contributes to nuclear positioning and cellular rigidity (summary by Haque et al., 2010 [PubMed 19933576]).[supplied by OMIM, Nov 2010]

**Applications:** WB (1:500-2000)

**IHC-P** (1:50-200)

**IHC-F** (1:50-200)

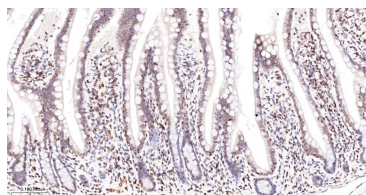
**IF** (1:50-200)

**ICC/IF** (1:50-200)

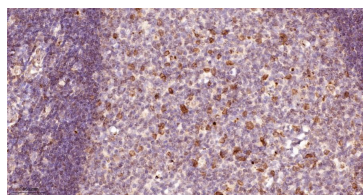
**Reactivity:** Human, Mouse, Rat

**Predicted MW.:** 80 kDa

### — VALIDATION IMAGES —



Paraformaldehyde-fixed, paraffin embedded Human Small Intestine; Antigen retrieval by boiling in sodium citrate buffer (pH6.0) for 15 min; The section was incubated with SUN2 Monoclonal Antibody, Unconjugated (bsm-54421R) at 1:200 overnight at 4°C, followed by conjugation to the bs-0295G-HRP and DAB (C-0010) staining.



Paraformaldehyde-fixed, paraffin embedded Human Thymus; Antigen retrieval by boiling in sodium citrate buffer (pH6.0) for 15 min; The section was incubated with SUN2 Monoclonal Antibody, Unconjugated (bsm-54421R) at 1:200 overnight at 4°C, followed by conjugation to the bs-0295G-HRP and DAB (C-0010) staining.