
Caspase-8 Recombinant Rabbit mAb

Catalog Number: bsm-52690R

Target Protein: Caspase-8

Concentration: 1mg/ml

Form: Liquid

Host: Rabbit

Clonality: Recombinant

Clone No.: 1A14

Isotype: IgG

Applications: WB (1:1000-2000)

Reactivity: Human

Predicted MW: 55 kDa

Subcellular Cytoplasm

Locations:

Entrez Gene: 841

Swiss Prot: Q14790

Source: KLH conjugated synthetic peptide derived from human Caspase-8: 385-435/479.

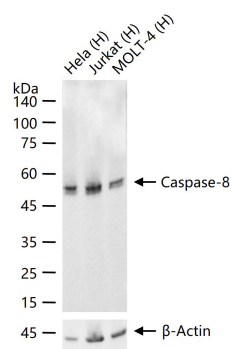
Purification: affinity purified by Protein A

Storage: 0.01M TBS (pH7.4) with 1% BSA, 0.02% Proclin300 and 50% Glycerol.

Shipped at 4°C. Store at -20°C for one year. Avoid repeated freeze/thaw cycles.

Background: Caspases are cysteine proteases, expressed as inactive precursors, that mediate apoptosis by proteolysis of specific substrates. Caspases have the ability to cleave after aspartic acid residues. There are two classes of caspases involved in apoptosis; initiators (activation by receptor cluster) and effectors (activation by mitochondrial permeability transition). Proapoptotic signals autocatalytically activate initiator caspases, such as Caspase 8 and Caspase 9. Activated initiator caspases then process effector caspases, such as Caspase 3 and Caspase 7, which in turn cause cell collapse.

VALIDATION IMAGES



25 ug total protein per lane of various lysates (see on figure) probed with Caspase-8 monoclonal antibody, unconjugated (bsm-52690R) at 1:1000 dilution and 4°C overnight incubation. Followed by conjugated secondary antibody incubation at r.t. for 60 min.