

bs-2833R**[Primary Antibody]****phospho-FSCN1 (Ser39) Rabbit pAb****BioSS**
ANTIBODIES

www.bioss.com.cn

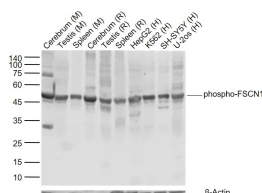
sales@bioss.com.cn

techsupport@bioss.com.cn

400-901-9800

DATASHEET

Host: Rabbit	Isotype: IgG	Applications: WB (1:500-2000)
Clonality: Polyclonal		Reactivity: Human, Mouse, Rat (predicted: Pig, Dog)
GeneID: 6624	SWISS: Q16658	
Target: FSCN1 (Ser39)		Predicted MW.: 55 kDa
Immunogen: KLH conjugated Synthesised phosphopeptide derived from human FSCN1 around the phosphorylation site of Ser39: AS(p-S)LK .		Subcellular Location: Cytoplasm
Purification: affinity purified by Protein A		
Concentration: 1mg/ml		
Storage: 0.01M TBS (pH7.4) with 1% BSA, 0.02% Proclin300 and 50% Glycerol. Shipped at 4°C. Store at -20°C for one year. Avoid repeated freeze/thaw cycles.		
Background: Human fascin is a highly conserved actin-bundling protein. Fascin, encoded by the human homolog for sn (hsn) gene, has been localized to microspikes and stress fibers of cultured cells where it is thought to be involved in the formation of microfilament bundles. It is expressed predominantly in dendritic cells. Lymphoid cells, myeloid cells and plasma cells are negative. However, Reed Sternberg cells in Hodgkin' s lymphoma are positive for fascin staining. Epstein-Barr virus may induce expression of fascin in B cells.		

VALIDATION IMAGES

Sample: Lane 1: Mouse Cerebrum tissue lysates
 Lane 2: Mouse Testis tissue lysates Lane 3:
 Mouse Spleen tissue lysates Lane 4: Rat
 Cerebrum tissue lysates Lane 5: Rat Testis tissue
 lysates Lane 6: Rat Spleen tissue lysates Lane 7:
 Human HepG2 cell lysates Lane 8: Human K562
 cell lysates Lane 9: Human SH-SY5Y cell lysates
 Lane 10: Human U-2os cell lysates Primary: Anti-
 phospho-FSCN1 (Ser39) (bs-2833R) at 1/1000
 dilution Secondary: IRDye800CW Goat Anti-
 Rabbit IgG at 1/20000 dilution Predicted band
 size: 55 kDa Observed band size: 51 kDa