

**bsm-60020R****[ Primary Antibody ]****ERBB2/HER2 Recombinant Rabbit mAb****BioSS**  
**ANTIBODIES**

www.bioss.com.cn

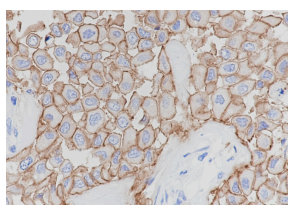
sales@bioss.com.cn

techsupport@bioss.com.cn

400-901-9800

**— DATASHEET —**

<b>Host:</b> Rabbit	<b>Isotype:</b> IgG	<b>Applications:</b> <b>IHC-P</b> (1:100-500) <b>IHC-F</b> (1:400-800) <b>IF</b> (1:100-500)  <b>Reactivity:</b> Human    <b>Predicted MW.:</b> 185 kDa  <b>Subcellular Location:</b> Cell membrane ,Cytoplasm ,Nucleus
<b>Clonality:</b> Recombinant		
<b>GeneID:</b> 2064	<b>SWISS:</b> P04626	
<b>Target:</b> ERBB2/HER2		
<b>Purification:</b> affinity purified by Protein A		
<b>Concentration:</b> 1mg/ml		
<b>Storage:</b> 0.01M TBS (pH7.4) with 1% BSA, 0.02% Proclin300 and 50% Glycerol. Shipped at 4°C. Store at -20°C for one year. Avoid repeated freeze/thaw cycles.		
<b>Background:</b> This gene encodes a member of the epidermal growth factor (EGF) receptor family of receptor tyrosine kinases. This protein has no ligand binding domain of its own and therefore cannot bind growth factors. However, it does bind tightly to other ligand-bound EGF receptor family members to form a heterodimer, stabilizing ligand binding and enhancing kinase-mediated activation of downstream signalling pathways, such as those involving mitogen-activated protein kinase and phosphatidylinositol-3 kinase. Allelic variations at amino acid positions 654 and 655 of isoform a (positions 624 and 625 of isoform b) have been reported, with the most common allele, Ile654/Ile655, shown here. Amplification and/or overexpression of this gene has been reported in numerous cancers, including breast and ovarian tumors. Alternative splicing results in several additional transcript variants, some encoding different isoforms and others that have not been fully characterized. [provided by RefSeq, Jul 2008].		

**— VALIDATION IMAGES —**

Tissue: Human breast cancer Section type:  
Formalin fixed & Paraffin-embedded section  
Retrieval method: High temperature and high pressure  
Retrieval buffer: Tris/EDTA buffer, pH 9.0  
Primary ab dilution: 1:1000  
Primary ab incubation condition: 1 hour at room temperature  
Counter stain: Hematoxylin  
Comment: Color brown is the positive signal for bsm-60020R