

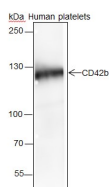
bsm-60017R**[Primary Antibody]****Bioss**
ANTIBODIES

www.bioss.com.cn

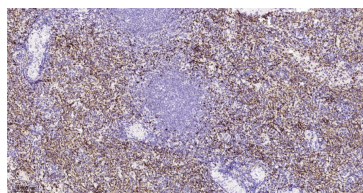
sales@bioss.com.cn

techsupport@bioss.com.cn

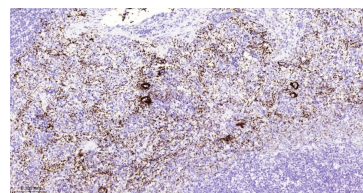
400-901-9800

GP1BA Recombinant Rabbit mAb**— DATASHEET —****Host:** Rabbit**Isotype:** IgG**Clonality:** Recombinant**CloneNo.:** 3B9**GeneID:** 2811**SWISS:** P07359**Target:** GP1BA**Purification:** affinity purified by Protein A**Concentration:** 1mg/ml**Storage:** 0.01M TBS (pH7.4) with 1% BSA, 0.02% Proclin300 and 50% Glycerol.
Shipped at 4°C. Store at -20°C for one year. Avoid repeated freeze/thaw cycles.**Background:** Glycoprotein Ib (GP Ib) is a platelet surface membrane glycoprotein composed of a heterodimer, an alpha chain and a beta chain, that is linked by disulfide bonds. The Gp Ib functions as a receptor for von Willebrand factor (VWF). The complete receptor complex includes noncovalent association of the alpha and beta subunits with platelet glycoprotein IX and platelet glycoprotein V. The binding of the GP Ib-IX-V complex to VWF facilitates initial platelet adhesion to vascular subendothelium after vascular injury, and also initiates signaling events within the platelet that lead to enhanced platelet activation, thrombosis, and hemostasis. This gene encodes the alpha subunit. Several polymorphisms and mutations have been described in this gene, some of which are the cause of Bernard-Soulier syndromes and platelet-type von Willebrand disease. [provided by RefSeq, Mar 2010].**Applications:** **WB** (1:500-2000)**IHC-P** (1:100-500)**IHC-F** (1:100-500)**IF** (1:100-500)**Reactivity:** Human, Mouse, Rat**Predicted MW.:** 67 kDa**Subcellular Location:** Cell membrane**— VALIDATION IMAGES —**

Blocking buffer: 5% NFDM/TBST Primary ab
 dilution: 1:2000 Primary ab incubation
 condition: 2 hours at room temperature Lysate:
 Human platelets Protein loading quantity: 20 µg
 Exposure time: 30s Predicted MW: 72 kDa
 Observed MW: 120 kDa



Paraformaldehyde-fixed, paraffin embedded
 Human Spleen; Antigen retrieval by boiling in
 sodium citrate buffer (pH6.0) for 15 min;
 Antibody incubation with GP1BA Monoclonal
 Antibody, Unconjugated(bsm-60017R) at 1:200
 overnight at 4°C, followed by conjugation to the
 bs-0295G-HRP and DAB (C-0010) staining.



Paraformaldehyde-fixed, paraffin embedded Rat
 Spleen; Antigen retrieval by boiling in sodium
 citrate buffer (pH6.0) for 15 min; Antibody
 incubation with GP1BA Monoclonal Antibody,
 Unconjugated(bsm-60017R) at 1:200 overnight
 at 4°C, followed by conjugation to the bs-0295G-
 HRP and DAB (C-0010) staining.