

**bsm-60013M****[ Primary Antibody ]****ROCK2 Mouse mAb****BioSS**  
**ANTIBODIES**

www.bioss.com.cn

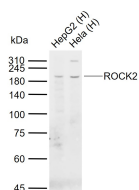
sales@bioss.com.cn

techsupport@bioss.com.cn

400-901-9800

**— DATASHEET —**

<b>Host:</b> Mouse	<b>Isotype:</b> IgG	<b>Applications:</b> WB (1:200-1000)
<b>Clonality:</b> Monoclonal		<b>Reactivity:</b> Human (predicted: Mouse)
<b>GeneID:</b> 9475	<b>SWISS:</b> O75116	
<b>Target:</b> ROCK2		
<b>Purification:</b> affinity purified by Protein A		<b>Predicted MW.:</b> 161 kDa
<b>Concentration:</b> 1mg/ml		<b>Subcellular Location:</b> Cell membrane ,Cytoplasm
<b>Storage:</b> 0.01M TBS (pH7.4) with 1% BSA, 0.02% Proclin300 and 50% Glycerol. Shipped at 4°C. Store at -20°C for one year. Avoid repeated freeze/thaw cycles.		
<b>Background:</b> The protein encoded by this gene is a serine/threonine kinase that regulates cytokinesis, smooth muscle contraction, the formation of actin stress fibers and focal adhesions, and the activation of the c-fos serum response element. This protein, which is an isozyme of ROCK1 is a target for the small GTPase Rho. [provided by RefSeq, Jul 2008].		

**— VALIDATION IMAGES —**

Sample: Lane 1: Human HepG2 cell lysates Lane  
2: Human Hela cell lysates Primary: Anti-ROCK2  
(bsm-60013M) at 1/1000 dilution Secondary:  
IRDye800CW Goat Anti-Mouse IgG at 1/20000  
dilution Predicted band size: 161 kDa Observed  
band size: 180 kDa