

**bsm-60010R****[ Primary Antibody ]****Bioss**  
**ANTIBODIES**

www.bioss.com.cn

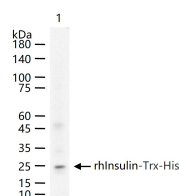
sales@bioss.com.cn

techsupport@bioss.com.cn

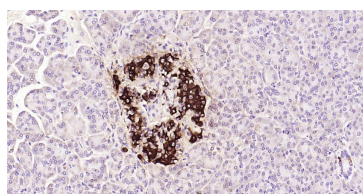
400-901-9800

**Insulin Recombinant Rabbit mAb****— DATASHEET —**

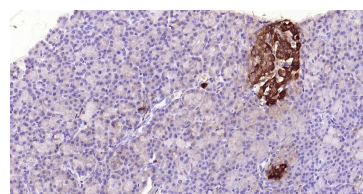
<b>Host:</b> Rabbit	<b>Isotype:</b> IgG	<b>Applications:</b> WB (1:500-2000) <b>IHC-P</b> (1:100-500) <b>IHC-F</b> (1:100-500) <b>IF</b> (1:100-500)  <b>Reactivity:</b> Human, Mouse, Rat  <b>Predicted MW.:</b> 12 kDa  <b>Subcellular Location:</b> Secreted
<b>Clonality:</b> Recombinant	<b>CloneNo.:</b> 2F3	
<b>GeneID:</b> 3630	<b>SWISS:</b> P01308	
<b>Target:</b> Insulin		
<b>Immunogen:</b> A synthesized peptide derived from human Insulin: 25-110.		
<b>Purification:</b> affinity purified by Protein A		
<b>Concentration:</b> 1mg/ml		
<b>Storage:</b> 0.01M TBS (pH7.4) with 1% BSA, 0.02% Proclin300 and 50% Glycerol. Shipped at 4°C. Store at -20°C for one year. Avoid repeated freeze/thaw cycles.		
<b>Background:</b> Insulin is one of the major regulatory hormones of intermediate metabolism throughout the body. The biological actions of this hormone involve integration of carbohydrate, protein, and lipid metabolism. Insulin enhances membrane transport of glucose, amino acids, and certain ions. It also promotes glycogen storage, formation of triglycerides and synthesis of proteins and nucleic acids. Immunocytochemical investigations have localized insulin in the B cells of pancreatic islets of Langerhans. Deficiency of insulin results in diabetes mellitus, one of the leading causes of morbidity and mortality in the general population. Insulin is also present in tumors of B cell origin such as insulinoma.		

**— VALIDATION IMAGES —**

100 ng rhInsulin-Trx-His protein (bs-42257P) per lane probed with Insulin monoclonal antibody respectively, unconjugated (bsm-60010R) at 1:1000 dilution and 4°C overnight incubation. Followed by corresponding conjugated secondary antibody incubation at r.t. for 60 min.



Paraformaldehyde-fixed, paraffin embedded Human Pancreas; Antigen retrieval by boiling in sodium citrate buffer (pH6.0) for 15 min; Antibody incubation with Insulin Monoclonal Antibody, Unconjugated(bsm-60010R) at 1:1000 overnight at 4°C, followed by conjugation to the SP Kit (Rabbit, SP-0023) and DAB (C-0010) staining.



Paraformaldehyde-fixed, paraffin embedded Rat Pancreas; Antigen retrieval by boiling in sodium citrate buffer (pH6.0) for 15 min; Antibody incubation with Insulin Monoclonal Antibody, Unconjugated(bsm-60010R) at 1:2000 overnight at 4°C, followed by conjugation to the SP Kit (Rabbit, SP-0023) and DAB (C-0010) staining.

**— SELECTED CITATIONS —**

- **[IF=5.6]** Zhongyi Xu. et al. A cucurbit[7]uril-mediated crosslinking-amplified microchannel resistance immunoassay via magnetic interception for point of care testing of insulin. TALANTA. 2025 Nov;294:128211 ;Human. 40294465
- **[IF=3.5]** Anna Nakamura. et al. Zinc deficiency affects insulin secretion and alters insulin-regulated metabolic signaling in rats. J TRACE ELEM MED BIO. 2023 Dec;;127375 IHC ;Rat. 10.1016/j.jtemb.2023.127375