

bsm-60006R**[Primary Antibody]****BioSS**
ANTIBODIES

www.bioss.com.cn

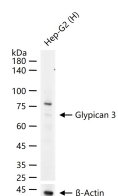
sales@bioss.com.cn

techsupport@bioss.com.cn

400-901-9800

Glypican 3 Recombinant Rabbit mAb**— DATASHEET —**

Host: Rabbit Clonality: Recombinant GeneID: 2719 Target: Glypican 3 Immunogen: A synthesized peptide derived from human Glypican 3: 1-250/580. Purification: affinity purified by Protein A Concentration: 1mg/ml Storage: 0.01M TBS (pH7.4) with 1% BSA, 0.02% Proclin300 and 50% Glycerol. Shipped at 4°C. Store at -20°C for one year. Avoid repeated freeze/thaw cycles. Background: Cell surface heparan sulfate proteoglycans are composed of a membrane-associated protein core substituted with a variable number of heparan sulfate chains. Members of the glypican-related integral membrane proteoglycan family (GRIPS) contain a core protein anchored to the cytoplasmic membrane via a glycosyl phosphatidylinositol linkage. These proteins may play a role in the control of cell division and growth regulation. The protein encoded by this gene can bind to and inhibit the dipeptidyl peptidase activity of CD26, and it can induce apoptosis in certain cell types. Deletion mutations in this gene are associated with Simpson-Golabi-Behmel syndrome, also known as Simpson dysmorphia syndrome. Alternative splicing results in multiple transcript variants. [provided by RefSeq, Sep 2009]	Isotype: IgG SWISS: P51654 Applications: WB (1:500-2000) Flow-Cyt (1:20-100) Reactivity: Human Predicted MW.: 65 kDa Subcellular Location: Secreted ,Extracellular matrix ,Cell membrane
--	--

— VALIDATION IMAGES —

25 ug total protein per lane of various lysates
 (see on figure) probed with Glypican 3
 monoclonal antibody, unconjugated
 (bsm-60006R) at 1:1000 dilution and 4°C
 overnight incubation. Followed by conjugated
 secondary antibody incubation at r.t. for 60 min.