

**bs-19414R****[ Primary Antibody ]****PRR16/DSC54 Rabbit pAb****BioSS**  
**ANTIBODIES**

www.bioss.com.cn

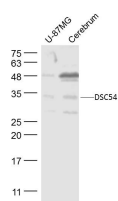
sales@bioss.com.cn

techsupport@bioss.com.cn

400-901-9800

**— DATASHEET —**

<b>Host:</b> Rabbit	<b>Isotype:</b> IgG	<b>Applications:</b> WB (1:500-2000)
<b>Clonality:</b> Polyclonal		<b>Reactivity:</b> Human, Mouse (predicted: Rat, Sheep, Cow, Chicken, Dog, Horse)
<b>GeneID:</b> 51334	<b>SWISS:</b> Q569H4	
<b>Target:</b> PRR16/DSC54		<b>Predicted MW.:</b> 33 kDa
<b>Immunogen:</b> KLH conjugated synthetic peptide derived from human PRR16/DSC54: 231-304/304.		<b>Subcellular Location:</b> Nucleus
<b>Purification:</b> affinity purified by Protein A		
<b>Concentration:</b> 1mg/ml		
<b>Storage:</b> 0.01M TBS (pH7.4) with 1% BSA, 0.02% Proclin300 and 50% Glycerol. Shipped at 4°C. Store at -20°C for one year. Avoid repeated freeze/thaw cycles.		

**— VALIDATION IMAGES —**

Sample: U-87MG(Human) Lysate at 30 ug  
Cerebrum (Mouse) Lysate at 40 ug Primary: Anti-  
DSC54 (bs-19414R) at 1/300 dilution Secondary:  
IRDye800CW Goat Anti-Rabbit IgG at 1/20000  
dilution Predicted band size: 33 kD Observed  
band size: 33 kD