

**bs-10972R****[ Primary Antibody ]****SCGN Rabbit pAb****Bioss**  
**ANTIBODIES**

www.bioss.com.cn

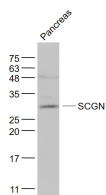
sales@bioss.com.cn

techsupport@bioss.com.cn

400-901-9800

**— DATASHEET —**

<b>Host:</b> Rabbit	<b>Isotype:</b> IgG	<b>Applications:</b> WB (1:500-2000)
<b>Clonality:</b> Polyclonal		<b>Reactivity:</b> Mouse (predicted: Human, Rat, Pig)
<b>GeneID:</b> 10590	<b>SWISS:</b> O76038	
<b>Target:</b> SCGN		<b>Predicted MW.:</b> 32 kDa
<b>Immunogen:</b> KLH conjugated synthetic peptide derived from human SCGN: 151-250/276.		<b>Subcellular Location:</b> Cell membrane ,Cytoplasm
<b>Purification:</b> affinity purified by Protein A		
<b>Concentration:</b> 1mg/ml		
<b>Storage:</b> 0.01M TBS (pH7.4) with 1% BSA, 0.02% Proclin300 and 50% Glycerol. Shipped at 4°C. Store at -20°C for one year. Avoid repeated freeze/thaw cycles.		
<b>Background:</b> The encoded protein is a secreted calcium-binding protein which is found in the cytoplasm. It is related to calbindin D-28K and calretinin. This protein is thought to be involved in KCL-stimulated calcium flux and cell proliferation. [provided by RefSeq, Jul 2008]		

**— VALIDATION IMAGES —**

Sample: Pancreas (Mouse) Lysate at 40 ug  
Primary: Anti- SCGN (bs-10972R) at 1/1000  
dilution Secondary: IRDye800CW Goat Anti-  
Rabbit IgG at 1/20000 dilution Predicted band  
size: 32 kD Observed band size: 32 kD