

**bs-19394R****[ Primary Antibody ]****Sarcalumenin Rabbit pAb****BioSS**  
**ANTIBODIES**

www.bioss.com.cn

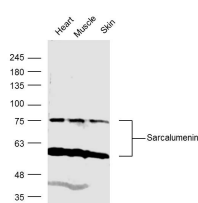
sales@bioss.com.cn

techsupport@bioss.com.cn

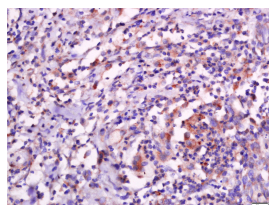
400-901-9800

**— DATASHEET —**

<b>Host:</b> Rabbit	<b>Isotype:</b> IgG	<b>Applications:</b> <b>WB</b> (1:500-2000) <b>IHC-P</b> (1:100-500) <b>IHC-F</b> (1:100-500) <b>IF</b> (1:100-500)  <b>Reactivity:</b> Human, Mouse  <b>Predicted MW.:</b> 54 kDa  <b>Subcellular Location:</b> Cell membrane ,Cytoplasm
<b>Clonality:</b> Polyclonal		
<b>GeneID:</b> 6345	<b>SWISS:</b> Q86TD4	
<b>Target:</b> Sarcalumenin		
<b>Immunogen:</b> KLH conjugated synthetic peptide derived from human Sarcalumenin,Isoform 2 : 451-550/932.		
<b>Purification:</b> affinity purified by Protein A		
<b>Concentration:</b> 1mg/ml		
<b>Storage:</b> 0.01M TBS (pH7.4) with 1% BSA, 0.02% Proclin300 and 50% Glycerol. Shipped at 4°C. Store at -20°C for one year. Avoid repeated freeze/thaw cycles.		

**— VALIDATION IMAGES —**

Sample: Heart (Mouse) Lysate at 40 ug Muscle (Mouse) Lysate at 40 ug Skin (Mouse) Lysate at 40 ug Primary: Anti- Sarcalumenin (bs-19394R) at 1/300 dilution Secondary: IRDye800CW Goat Anti-Rabbit IgG at 1/20000 dilution Predicted band size: 97kD Observed band size: 75 kD



Tissue/cell: human esophageal carcinoma; 4% Paraformaldehyde-fixed and paraffin-embedded; Antigen retrieval: citrate buffer (0.01M, pH 6.0 ), Boiling bathing for 15min; Block endogenous peroxidase by 3% Hydrogen peroxide for 30min; Blocking buffer (normal goat serum,C-0005) at 37°C for 20 min; Incubation: Anti-Sarcalumenin Polyclonal Antibody, Unconjugated(bs-19394R) 1:500, overnight at 4°C, followed by conjugation to the secondary antibody(SP-0023) and DAB(C-0010) staining