

VEGF165 Rabbit pAb

Catalog Number: bs-41613R

Target Protein: VEGF165

Form: Liquid

Host: Rabbit

Clonality: Polyclonal

Isotype: IgG

Applications: WB (1:500-2000)

Reactivity: Human

Predicted MW: 18 kDa

Entrez Gene: 7422

Swiss Prot: P15692

Source: Recombinant human VEGF165 protein (C-His): 27-191/191.

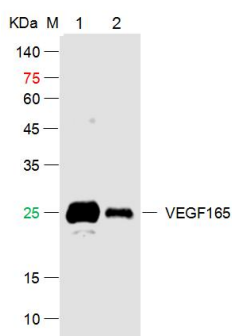
Purification: affinity purified by Protein A

Storage: 0.01M TBS (pH7.4) with 1% BSA, 0.02% Proclin300 and 50% Glycerol.

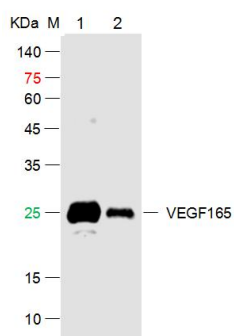
Shipped at 4°C. Store at -20°C for one year. Avoid repeated freeze/thaw cycles.

Background: Vascular endothelial growth factor (VEGF), originally known as vascular permeability factor (VPF), is a signal protein produced by cells that stimulates the formation of blood vessels. To be specific, VEGF is a sub-family of growth factors, the platelet-derived growth factor family of cystine-knot growth factors. They are important signaling proteins involved in both vasculogenesis (the de novo formation of the embryonic circulatory system) and angiogenesis (the growth of blood vessels from pre-existing vasculature).

VALIDATION IMAGES



Sample: Lane 1: Human VEGF165 Protein at 500ng Lane 2: Human VEGF165 Protein at 50ng Primary: Rabbit Anti-VEGF165 Protein Antibody at 1/1000 dilution Secondary: IRDye800CW Goat Anti-Rabbit IgG at 1/20000 dilution Predicted band size: 21kD Observed band size: 18kD



Sample: Lane 1: Recombinant Human VEGF165 Protein at 500ng Lane 2: Recombinant Human VEGF165 Protein at 50ng Primary: Rabbit Anti-VEGF165 Monoclonal Antibody at 1/1000 dilution (Cat.bsm-41613R) Secondary: IRDye800CW Goat Anti-Rabbit IgG at 1/20000 dilution Predicted band size: 21kD Observed band size: 25kD