

bs-43012R**[Primary Antibody]****VEGFR2 Rabbit pAb****Bioss**
ANTIBODIES

www.bioss.com.cn

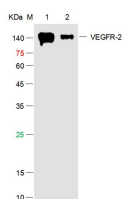
sales@bioss.com.cn

techsupport@bioss.com.cn

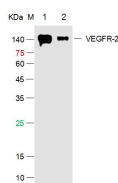
400-901-9800

— DATASHEET —

Host: Rabbit Clonality: Polyclonal GeneID: 3791 Target: VEGFR2 Immunogen: Recombinant human VEGFR2 protein: 20-764/1356. Purification: affinity purified by Protein A Concentration: 1mg/ml Storage: 0.01M TBS (pH7.4) with 1% BSA, 0.02% Proclin300 and 50% Glycerol. Shipped at 4°C. Store at -20°C for one year. Avoid repeated freeze/thaw cycles. Background: Vascular endothelial growth factor (VEGF) is a major growth factor for endothelial cells. This gene encodes one of the two receptors of the VEGF. This receptor, known as kinase insert domain receptor, is a type III receptor tyrosine kinase. It functions as the main mediator of VEGF-induced endothelial proliferation, survival, migration, tubular morphogenesis and sprouting. The signalling and trafficking of this receptor are regulated by multiple factors, including Rab GTPase, P2Y purine nucleotide receptor, integrin alphaVbeta3, T-cell protein tyrosine phosphatase, etc.. Mutations of this gene are implicated in infantile capillary hemangiomas. [provided by RefSeq, May 2009].	Isotype: IgG SWISS: P35968	Applications: WB (1:500-2000) Reactivity: Human Predicted MW.: 147 kDa Subcellular Location: Secreted ,Cell membrane ,Cytoplasm ,Nucleus
--	---	---

— VALIDATION IMAGES —

Sample: Lane 1: Recombinant Human VEGFR2 Protein at 500ng Lane 2: Recombinant Human VEGFR2 Protein at 50ng Primary: Rabbit Anti-VEGFR-2 Polyclonal Antibody at 1/1000 dilution (Cat.bs-43012R) Secondary: IRDye800CW Goat Anti-Rabbit IgG at 1/20000 dilution Predicted band size: 87kD Observed band size: 125-155kD



Sample: Lane 1: Human VEGFR2 Protein at 500ng Lane 2: Human VEGFR2 Protein at 50ng Primary: Rabbit Anti-VEGFR2 Protein Antibody at 1/1000 dilution Secondary: IRDye800CW Goat Anti-Rabbit IgG at 1/20000 dilution Predicted band size: 87kD Observed band size: kD