

[Primary Antibody]

Haptoglobin Rabbit pAb



BioSS
ANTIBODIES

www.bioss.com.cn

sales@bioss.com.cn

techsupport@bioss.com.cn

400-901-9800

— DATASHEET

Host: Rabbit

Isotype: IgG

Applications: WB (1:500-2000)

Clonality: Polyclonal

GeneID: 3240

SWISS: P00738

Target: Haptoglobin

Immunogen: Recombinant human Haptoglobin protein: 19-406/406.

Purification: affinity purified by Protein A

Concentration: 1mg/ml

Storage: 0.01M TBS (pH7.4) with 1% BSA, 0.02% Proclin300 and 50% Glycerol.
Shipped at 4°C. Store at -20°C for one year. Avoid repeated freeze/thaw cycles.

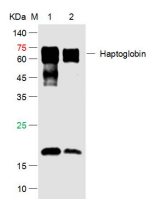
Background: This gene encodes a preproprotein, which is processed to yield both alpha and beta chains, which subsequently combine as a tetramer to produce haptoglobin. Haptoglobin functions to bind free plasma hemoglobin, which allows degradative enzymes to gain access to the hemoglobin, while at the same time preventing loss of iron through the kidneys and protecting the kidneys from damage by hemoglobin. Mutations in this gene and/or its regulatory regions cause ahaptoglobinemia or hypohaptoglobinemia. This gene has also been linked to diabetic nephropathy, the incidence of coronary artery disease in type 1 diabetes, Crohn's disease, inflammatory disease behavior, primary sclerosing cholangitis, susceptibility to idiopathic Parkinson's disease, and a reduced incidence of Plasmodium falciparum malaria. A similar duplicated gene is located next to this gene on chromosome 16. Multiple transcript variants encoding different isoforms have been found for this gene. [provided by RefSeq, Jul 2008]

Reactivity: Human, Mouse

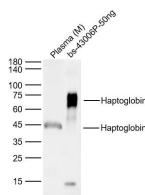
Predicted MW.: 27/43 kDa

Subcellular Location: Secreted

— VALIDATION IMAGES



Sample: Lane 1: Human Haptoglobin Protein at 500ng Lane 2: Human Haptoglobin Protein at 50ng Primary: Rabbit Anti-Haptoglobin Protein Antibody at 1/1000 dilution Secondary: IRDye800CW Goat Anti-Rabbit IgG at 1/20000 dilution Predicted band size: 47kD Observed band size: kD



Sample: Lane 1: Mouse Plasma Lane 2:
Recombinant human Haptoglobin protein
(bs-43006P) at 50ng Primary: Anti-
Haptoglobin (bs-43006R) at 1/1000 dilution
Secondary: IRDye800CW Goat Anti-Rabbit IgG at
1/20000 dilution Predicted band size: 27/43kDa
Observed band size: 27/43kDa