

bs-34106R**[Primary Antibody]****NF2 Rabbit pAb****BioSS**
ANTIBODIES

www.bioss.com.cn

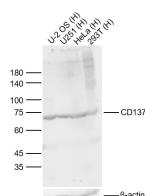
sales@bioss.com.cn

techsupport@bioss.com.cn

400-901-9800

— DATASHEET —

Host: Rabbit	Isotype: IgG	Applications: WB (1:500-2000) ELISA (1:20000)
Clonality: Polyclonal		Reactivity: Human (predicted: Mouse, Rat)
GeneID: 4771	SWISS: P35240	
Target: NF2		Predicted MW.: 70 kDa
Immunogen: KLH conjugated synthetic peptide derived from human NF2: 1-50/590.		Subcellular Location: Cell membrane ,Nucleus
Purification: affinity purified by Protein A		
Concentration: 1mg/ml		
Storage: 0.01M TBS (pH7.4) with 1% BSA, 0.02% Proclin300 and 50% Glycerol. Shipped at 4°C. Store at -20°C for one year. Avoid repeated freeze/thaw cycles.		
Background: Neurofibromin 2 (NF2) is a tumor suppressor gene encoding the protein Merlin. Merlin is closely related to the ERM (ezrin, radixin, moesin) family of proteins. The precise function of Merlin is not clear. It is thought to provide a link between the actin cytoskeleton and membrane associated proteins, playing a role in transduction of extracellular signals. It has been implicated in cell proliferation and cellular motility. Mutations in the NF2 gene cause neurofibromatosis type II, a condition characterised by the development of tumors in the central nervous system.		

— VALIDATION IMAGES —

Sample: Lane 1: Human U-2 OS cell Lysates Lane 2: Human U251 cell Lysates Lane 3: Human Hela cell Lysates Lane 4: Human 293T cell Lysates
 Primary: Anti-NF2 (bs-34106R) at 1/1000 dilution
 Secondary: IRDye800CW Goat Anti-Rabbit IgG at 1/20000 dilution Predicted band size: 70kDa
 Observed band size: 70kDa