

bsm-60620R**[Primary Antibody]****BioSS**
ANTIBODIES

www.bioss.com.cn

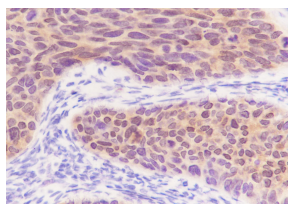
sales@bioss.com.cn

techsupport@bioss.com.cn

400-901-9800

S100A2 Recombinant Rabbit mAb**— DATASHEET —**

Host: Rabbit	Isotype: IgG	Applications: IHC-P (1:100-500) IHC-F (1:100-500) IF Reactivity: Human Subcellular Location: Cytoplasm
Clonality: Recombinant	CloneNo.: H6A12	
Target: S100A2		
Purification: affinity purified by Protein A		
Concentration: 1mg/ml		
Storage: 0.01M TBS (pH7.4) with 1% BSA, 0.02% Proclin300 and 50% Glycerol. Shipped at 4°C. Store at -20°C for one year. Avoid repeated freeze/thaw cycles.		
Background: The protein encoded by this gene is a member of the S100family of proteins containing 2 EF-hand calcium-binding motifs.S100 proteins are localized in the cytoplasm and/or nucleus of a wide range of cells, and involved in the regulation of a number of cellular processes such as cell cycle progression and differentiation. S100 genes include at least 13 members which are located as a cluster on chromosome 1q21. This protein may have a tumor suppressor function. Chromosomal rearrangements and altered expression of this gene have been implicated in breast cancer.		

— VALIDATION IMAGES —

Tissue: Human cervical carcinoma Section type:
Formalin fixed & Paraffin -embedded section
Retrieval method: High temperature and high pressure Retrieval buffer: Tris/EDTA buffer, pH 9.0 Primary ab dilution: 1:100 Primary ab incubation condition: 1 hour at room temperature Secondary ab: SP Kit(Rabbit) (sp-0023) Counter stain: Hematoxylin (Blue)
Comment: Color brown is the positive signal for bsm-60620R