

bs-13824R**[Primary Antibody]****CECR2 Rabbit pAb****Bioss**
ANTIBODIES

www.bioss.com.cn

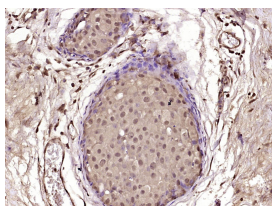
sales@bioss.com.cn

techsupport@bioss.com.cn

400-901-9800

— DATASHEET —

Host: Rabbit	Isotype: IgG	Applications: IHC-P (1:100-500) IHC-F (1:100-500) IF (1:100-500) Reactivity: Human (predicted: Mouse, Rat, Chicken, Dog, Horse) Predicted MW.: 59/164 kDa Subcellular Location: Nucleus
Clonality: Polyclonal		
GeneID: 27443	SWISS: Q9BXF3	
Target: CECR2		
Immunogen: KLH conjugated synthetic peptide derived from human CECR2: 201-300/1484.		
Purification: affinity purified by Protein A		
Concentration: 1mg/ml		
Storage: 0.01M TBS (pH7.4) with 1% BSA, 0.02% Proclin300 and 50% Glycerol. Shipped at 4°C. Store at -20°C for one year. Avoid repeated freeze/thaw cycles.		
Background: Bromodomains are 110 amino acid long domains, that are found in many chromatin associated proteins. Bromodomains can interact specifically with acetylated lysine. This family consists of several mammalian T-cell surface antigen CD2 proteins as well as homologous African swine fever virus sequences.		

— VALIDATION IMAGES —

Paraformaldehyde-fixed, paraffin embedded (Human breast carcinoma); Antigen retrieval by boiling in sodium citrate buffer (pH6.0) for 15min; Block endogenous peroxidase by 3% hydrogen peroxide for 20 minutes; Blocking buffer (normal goat serum) at 37°C for 30min; Antibody incubation with (CECR2) Polyclonal Antibody, Unconjugated (bs-13824R) at 1:400 overnight at 4°C, followed by operating according to SP Kit(Rabbit) (sp-0023) instructions and DAB staining.