

bs-10076R**[Primary Antibody]****ROR1 Rabbit pAb****Bioss**
ANTIBODIES

www.bioss.com.cn

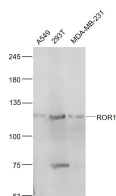
sales@bioss.com.cn

techsupport@bioss.com.cn

400-901-9800

— DATASHEET —

Host: Rabbit	Isotype: IgG	Applications: WB (1:500-2000)
Clonality: Polyclonal		Reactivity: Human (predicted: Rat, Rabbit, Pig, Cow, Dog)
GeneID: 4919	SWISS: Q01973	
Target: ROR1		Predicted MW.: 100 kDa
Immunogen: KLH conjugated synthetic peptide derived from human ROR1: 301-360/937. < Extracellular >		Subcellular Location: Cell membrane
Purification: affinity purified by Protein A		
Concentration: 1mg/ml		
Storage: 0.01M TBS (pH7.4) with 1% BSA, 0.02% Proclin300 and 50% Glycerol. Shipped at 4°C. Store at -20°C for one year. Avoid repeated freeze/thaw cycles.		
Background: This gene encodes a receptor tyrosine kinase-like orphan receptor that modulates neurite growth in the central nervous system. The encoded protein is a glycosylated type I membrane protein that belongs to the ROR subfamily of cell surface receptors. It is a pseudokinase that lacks catalytic activity and may interact with the non-canonical Wnt signalling pathway. This gene is highly expressed during early embryonic development but expressed at very low levels in adult tissues. Increased expression of this gene is associated with B-cell chronic lymphocytic leukaemia. Alternative splicing results in multiple transcript variants encoding different isoforms. [provided by RefSeq, Jun 2012]		

— VALIDATION IMAGES —

Sample: A549(Human) Cell Lysate at 30 ug
293T(Human) Cell Lysate at 30 ug MDA-MB-231
(Human) Cell Lysate at 30 ug Primary: Anti- ROR1
(bs-10076R) at 1/1000 dilution Secondary:
IRDye800CW Goat Anti-Rabbit IgG at 1/20000
dilution Predicted band size: 130 kD Observed
band size: 130 kD

— SELECTED CITATIONS —

- **[IF=6.8]** Yang Zhang. et al. Development of Peptide Paratope Mimics Derived from the Anti-ROR1 Antibody and Long-Acting Peptide-Drug Conjugates for Targeted Cancer Therapy. J MED CHEM. 2024;XXXX(XXX):XXX-XXX IF ;Human. 38943600