

bs-12191R**[Primary Antibody]****DZIP3 Rabbit pAb****BioSS**
ANTIBODIES

www.bioss.com.cn

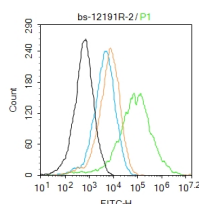
sales@bioss.com.cn

techsupport@bioss.com.cn

400-901-9800

DATASHEET

Host: Rabbit	Isotype: IgG	Applications: Flow-Cyt (2ug/Test)
Clonality: Polyclonal		Reactivity: Mouse (predicted: Human, Rat, Rabbit, Cow, Dog, Horse)
GeneID: 9666	SWISS: Q86Y13	
Target: DZIP3		Predicted MW.: 139 kDa
Immunogen: KLH conjugated synthetic peptide derived from Human DZIP3: 245-350/1208.		Subcellular Location: Cytoplasm
Purification: affinity purified by Protein A		
Concentration: 1mg/ml		
Storage: 0.01M TBS (pH7.4) with 1% BSA, 0.02% Proclin300 and 50% Glycerol. Shipped at 4°C. Store at -20°C for one year. Avoid repeated freeze/thaw cycles.		
Background: DZIP3 is a 1,208 amino acid protein that localizes to the cytoplasm and contains one RING-type zinc finger. Expressed in a variety of tissues with highest expression in heart, skeletal muscle and kidney, DZIP3 functions as an E3 ubiquitin-protein ligase that accepts ubiquitin from an E2 ubiquitin-conjugating enzyme, thereby playing a role in signaling events throughout the cell. Multiple isoforms of DZIP3 exist due to alternative splicing events.		

VALIDATION IMAGES

Blank control: Mouse kidney. Primary Antibody (green line): Rabbit Anti-DZIP3 antibody (bs-12191R) Dilution: 2µg / 10⁶ cells; Isotype Control Antibody (orange line): Rabbit IgG. Secondary Antibody: Goat anti-rabbit IgG-AF488 Dilution: 1µg / test. Protocol The cells were fixed with 4% PFA (10min at room temperature) and then permeabilized with 0.1% PBST for 20 min at room temperature. The cells were then incubated in 5% BSA to block non-specific protein-protein interactions for 30 min at room temperature. Cells stained with Primary Antibody for 30 min at room temperature. The secondary antibody used for 40 min at room temperature. Acquisition of 20,000 events was performed.