

bs-25220R**[Primary Antibody]****NALP4 Rabbit pAb****Bioss**
ANTIBODIES

www.bioss.com.cn

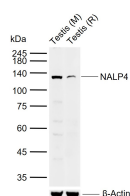
sales@bioss.com.cn

techsupport@bioss.com.cn

400-901-9800

— DATASHEET —

Host: Rabbit	Isotype: IgG	Applications: WB (1:500-2000)
Clonality: Polyclonal		Reactivity: Mouse, Rat
Target: NALP4		
Immunogen: KLH conjugated synthetic peptide derived from rat NLRP4: 331-430/982.		Predicted MW.: 113 kDa
Purification: affinity purified by Protein A		Subcellular Location: Extracellular matrix, Cytoplasm
Concentration: 1mg/ml		
Storage: 0.01M TBS (pH7.4) with 1% BSA, 0.02% Proclin300 and 50% Glycerol. Shipped at 4°C. Store at -20°C for one year. Avoid repeated freeze/thaw cycles.		
Background: The protein encoded by this gene is a member of the nucleotide-binding and leucine-rich repeat receptor (NLR) family, and is predicted to contain an N-terminal pyrin effector domain (PYD), a centrally-located nucleotide-binding and oligomerization domain (NACHT) and C-terminal leucine-rich repeats (LRR). This gene product has a demonstrated role as a negative regulator of autophagy and type I interferon signaling pathways as a result of protein interactions with its NACHT domain. The PYD domain has also been shown to be important in the inhibition of NF-κB (nuclear factor kappa-light-chain-enhancer of activated B cells). [provided by RefSeq, Dec 2016]		

— VALIDATION IMAGES —

Sample: Lane 1: Mouse Testis tissue lysates Lane
2: Rat Testis tissue lysates Primary: Anti-NALP4
(bs-25220R) at 1/1000 dilution Secondary:
IRDye800CW Goat Anti-Rabbit IgG at 1/20000
dilution Predicted band size: 113 kDa Observed
band size: 120 kDa