

## DGKH Rabbit pAb

Catalog Number: bs-25200R

Target Protein: DGKH

Concentration: 1mg/ml

Form: Liquid

Host: Rabbit

Clonality: Polyclonal

Isotype: IgG

Applications: IHC-P (1:100-500), IHC-F (1:400-800), IF (1:100-500)

Reactivity: Human (predicted: Mouse, Rat, Rabbit, Pig, Cow, Dog, Horse)

Predicted MW: 135 kDa

Entrez Gene: 160851

Swiss Prot: Q86XP1

Source: KLH conjugated synthetic peptide derived from human DGKH: 741-840/1220.

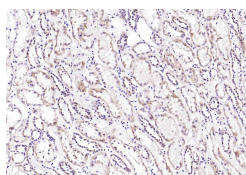
Purification: affinity purified by Protein A

Storage: 0.01M TBS (pH7.4) with 1% BSA, 0.02% Proclin300 and 50% Glycerol.

Shipped at 4°C. Store at -20°C for one year. Avoid repeated freeze/thaw cycles.

**Background:** This gene encodes a member of the diacylglycerol kinase (DGK) enzyme family of proteins, specifically the type II DGK subfamily. Members of this family are involved in regulating the intracellular concentrations of diacylglycerol and phosphatidic acid. Alternatively spliced transcript variants encoding distinct isoforms have been identified for this gene. [provided by RefSeq, Mar 2011]

### VALIDATION IMAGES



Paraformaldehyde-fixed, paraffin embedded (human kidney); Antigen retrieval by boiling in sodium citrate buffer (pH6.0) for 15min; Block endogenous peroxidase by 3% hydrogen peroxide for 20 minutes; Blocking buffer (normal goat serum) at 37°C for 30min; Incubation with (DGKH) Polyclonal Antibody, Unconjugated (bs-25200R) at 1:200 overnight at 4°C, followed by operating according to SP Kit(Rabbit) (sp-0023) instructions and DAB staining.