

bs-25185R**[Primary Antibody]****SLCO2B1 Rabbit pAb****BioSS**
ANTIBODIES

www.bioss.com.cn

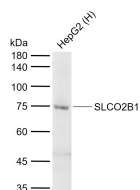
sales@bioss.com.cn

techsupport@bioss.com.cn

400-901-9800

— DATASHEET —

Host: Rabbit	Isotype: IgG	Applications: WB (1:500-2000)
Clonality: Polyclonal		Reactivity: Human
GeneID: 11309	SWISS: O94956	
Target: SLCO2B1		
Purification: affinity purified by Protein A		Predicted MW.: 77 kDa
Concentration: 1mg/ml		Subcellular Location: Cell membrane
Storage: 0.01M TBS (pH7.4) with 1% BSA, 0.02% Proclin300 and 50% Glycerol. Shipped at 4°C. Store at -20°C for one year. Avoid repeated freeze/thaw cycles.		
Background: SLCO2B1 (solute carrier organic anion transporter family member 2B1), or Organic anion transporter B (OATP-B) mediates sodium-independent transport of organic anions. Unlike other related proteins, SLCO2B1 is expressed in many tissues, including liver, placenta, brain, heart and intestine. SLCO2B1 plays a role in the uptake of steroids and a number of drugs such as statins.		

— VALIDATION IMAGES —

Sample: Lane 1: Human HepG2 cell lysates
Primary: Anti-SLCO2B1 (bs-25185R) at 1/1000
dilution Secondary: IRDye800CW Goat Anti-
Rabbit IgG at 1/20000 dilution Predicted band
size: 77 kDa Observed band size: 75 kDa