

bs-15391R

[Primary Antibody]

GPR89A Rabbit pAb

Bioss
ANTIBODIES

www.bioss.com.cn

sales@bioss.com.cn

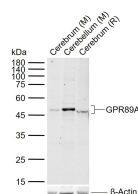
techsupport@bioss.com.cn

400-901-9800

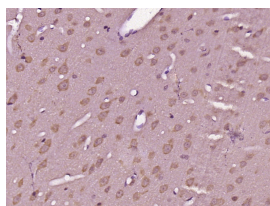
— DATASHEET —

Host: Rabbit	Isotype: IgG	Applications: WB (1:500-2000) IHC-P (1:100-500) IHC-F (1:100-500) IF (1:100-500) Reactivity: Mouse, Rat (predicted: Human, Rabbit, Sheep, Cow, Dog) Predicted MW.: 53 kDa Subcellular Location: Cytoplasm
Clonality: Polyclonal		
GeneID: 653519	SWISS: B7ZAQ6	
Target: GPR89A		
Immunogen: KLH conjugated synthetic peptide derived from human GPR89A: 221-320/445.		
Purification: affinity purified by Protein A		
Concentration: 1mg/ml		
Storage: 0.01M TBS (pH7.4) with 1% BSA, 0.02% Proclin300 and 50% Glycerol. Shipped at 4°C. Store at -20°C for one year. Avoid repeated freeze/thaw cycles.		
Background: GPR89A is a nearly identical copy of the GPR89B gene (MIM612806).		

— VALIDATION IMAGES —



Sample: Lane 1: Mouse Cerebrum tissue lysates
Lane 2: Mouse Cerebellum tissue lysates Lane 3:
Rat Cerebrum tissue lysates Primary: Anti-
GPR89A (bs-15391R) at 1/1000 dilution
Secondary: IRDye800CW Goat Anti-Rabbit IgG at
1/20000 dilution Predicted band size: 53 kDa
Observed band size: 50 kDa



Paraformaldehyde-fixed, paraffin embedded
(Rat brain); Antigen retrieval by boiling in
sodium citrate buffer (pH6.0) for 15min; Block
endogenous peroxidase by 3% hydrogen
peroxide for 20 minutes; Blocking buffer (normal
goat serum) at 37°C for 30min; Antibody
incubation with (GPR89A) Polyclonal Antibody,
Unconjugated (bs-15391R) at 1:400 overnight at
4°C, followed by operating according to SP
Kit(Rabbit) (sp-0023) instructions and DAB
staining.