

**bs-15395R****[ Primary Antibody ]****GPS2 Rabbit pAb****BioSS**  
**ANTIBODIES**

www.bioss.com.cn

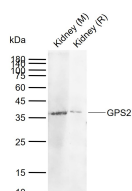
sales@bioss.com.cn

techsupport@bioss.com.cn

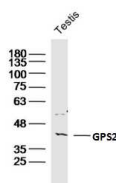
400-901-9800

**— DATASHEET —**

<b>Host:</b> Rabbit <b>Clonality:</b> Polyclonal <b>GeneID:</b> 2874 <b>Target:</b> GPS2 <b>Immunogen:</b> KLH conjugated synthetic peptide derived from human GPS2: 1-100/327. <b>Purification:</b> affinity purified by Protein A <b>Concentration:</b> 1mg/ml <b>Storage:</b> 0.01M TBS (pH7.4) with 1% BSA, 0.02% Proclin300 and 50% Glycerol. Shipped at 4°C. Store at -20°C for one year. Avoid repeated freeze/thaw cycles. <b>Background:</b> This gene encodes a protein involved in G protein-mitogen-activated protein kinase (MAPK) signaling cascades. When overexpressed in mammalian cells, this gene could potentially suppress a RAS- and MAPK-mediated signal and interfere with JNK activity, suggesting that the function of this gene may be signal repression. The encoded protein is an integral subunit of the NCOR1-HDAC3 (nuclear receptor corepressor 1-histone deacetylase 3) complex, and it was shown that the complex inhibits JNK activation through this subunit and thus could potentially provide an alternative mechanism for hormone-mediated antagonism of AP1 (activator protein 1) function. [provided by RefSeq, Jul 2008]	<b>Isotype:</b> IgG <b>SWISS:</b> Q13227	<b>Applications:</b> WB (1:500-2000) <b>Reactivity:</b> Human, Mouse, Rat (predicted: Pig, Sheep, Cow, Dog) <b>Predicted MW.:</b> 37 kDa <b>Subcellular Location:</b> Nucleus
--	---	---

**— VALIDATION IMAGES —**

Sample: Lane 1: Mouse Kidney tissue lysates  
 Lane 2: Rat Kidney tissue lysates Primary: Anti-GPS2 (bs-15395R) at 1/1000 dilution Secondary: IRDye800CW Goat Anti-Rabbit IgG at 1/20000 dilution Predicted band size: 37 kDa Observed band size: 37 kDa



Sample: Testis (Mouse) Lysate at 40 ug Primary: Anti-GPS2 (bs-15395R) at 1/300 dilution Secondary: IRDye800CW Goat Anti-Rabbit IgG at 1/20000 dilution Predicted band size: 37kD Observed band size: 37kD