

**bs-15385R****[ Primary Antibody ]****GPR161 Rabbit pAb****BioSS**  
**ANTIBODIES**

www.bioss.com.cn

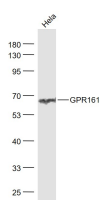
sales@bioss.com.cn

techsupport@bioss.com.cn

400-901-9800

**— DATASHEET —**

|   |                      |   |
|---|----------------------|---|
| <b>Host:</b> Rabbit   | <b>Isotype:</b> IgG  | <b>Applications:</b> WB (1:500-2000)  |
| <b>Clonality:</b> Polyclonal  |                      | <b>Reactivity:</b> Human (predicted: Mouse, Rat, Pig, Sheep, Cow, Dog, Horse) |
| <b>GeneID:</b> 23432  | <b>SWISS:</b> Q8N6U8 | <b>Predicted MW.:</b> 59 kDa  |
| <b>Target:</b> GPR161   |                      | <b>Subcellular Location:</b> Cell membrane                                    |
| <b>Immunogen:</b> KLH conjugated synthetic peptide derived from human GPR161: 121-220/529. < Extracellular >  |                      |   |
| <b>Purification:</b> affinity purified by Protein A   |                      |   |
| <b>Concentration:</b> 1mg/ml  |                      |   |
| <b>Storage:</b> 0.01M TBS (pH7.4) with 1% BSA, 0.02% Proclin300 and 50% Glycerol.<br>Shipped at 4°C. Store at -20°C for one year. Avoid repeated freeze/thaw cycles.  |                      |   |
| <b>Background:</b> G protein-coupled receptors (GPRs), also known as seven transmembrane receptors, heptahelical receptors or 7TM receptors, comprise a superfamily of proteins that play a role in many different stimulus-response pathways. G-protein coupled receptors translate extracellular signals into intracellular signals (G-protein activation) and they respond to a variety of signaling molecules, such as hormones and neurotransmitters. GPR161 (G protein-coupled receptor 161), also known as RE2, is a 529 amino acid protein that belongs to the G-protein coupled receptor family. Localized to the cell membrane, GPR161 is a multi-pass membrane protein that functions as an orphan receptor, relaying extracellular signals to the intracellular environment. Two isoforms of GPR161 exist due to alternative splicing events. |                      |   |

**— VALIDATION IMAGES —**

Sample: HeLa (Human) cell Lysate at 30 ug  
Primary: Anti- GPR161 (bs-15385R) at 1/1000  
dilution Secondary: IRDye800CW Goat Anti-  
Rabbit IgG at 1/20000 dilution Predicted band  
size: 59 kD Observed band size: 65 kD