

GPR176 Rabbit pAb

Catalog Number: bs-15387R

Target Protein: GPR176

Concentration: 1mg/ml

Form: Liquid

Host: Rabbit

Clonality: Polyclonal

Isotype: IgG

Applications: WB (1:500-2000), IHC-P (1:100-500), IHC-F (1:100-500), IF (1:100-500)

Reactivity: Human, Mouse (predicted:Rat, Rabbit, Pig, Sheep, Cow, Horse)

Predicted MW: 57 kDa

Subcellular Cell membrane

Locations:

Entrez Gene: 11245

Swiss Prot: Q14439

Source: KLH conjugated synthetic peptide derived from human GPR176: 131-230/515.

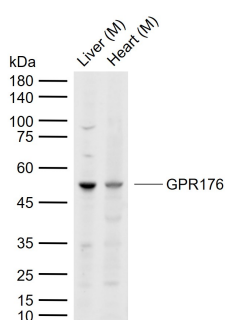
Purification: affinity purified by Protein A

Storage: 0.01M TBS (pH7.4) with 1% BSA, 0.02% Proclin300 and 50% Glycerol.

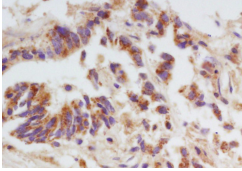
Shipped at 4°C. Store at -20°C for one year. Avoid repeated freeze/thaw cycles.

Background: GPR176 is a Members of the G protein-coupled receptor family, such as GPR176, are cell surface receptors involved in responses to hormones, growth factors, and neurotransmitters (Hata et al., 1995 [PubMed 7893747]).[supplied by OMIM, Jul 2008].

VALIDATION IMAGES



Sample: Lane 1: Mouse Liver tissue lysates Lane 2: Mouse Heart tissue lysates Primary: Anti-GPR176 (bs-15387R) at 1/1000 dilution Secondary: IRDye800CW Goat Anti-Rabbit IgG at 1/20000 dilution Predicted band size: 57 kDa Observed band size: 53 kDa



Tissue/cell: human colon carcinoma; 4% Paraformaldehyde-fixed and paraffin-embedded; Antigen retrieval: citrate buffer (0.01M, pH 6.0), Boiling bathing for 15min; Block endogenous peroxidase by 3% Hydrogen peroxide for 30min; Blocking buffer (normal goat serum,C-0005) at 37°C for 20 min; Incubation: Anti-GPR176 Polyclonal Antibody, Unconjugated(bs-15387R) 1:200, overnight at 4°C, followed by conjugation to the secondary antibody(SP-0023) and DAB(C-0010) staining