
USP16 Rabbit pAb

Catalog Number: bs-13829R

Target Protein: USP16

Concentration: 1mg/ml

Form: Liquid

Host: Rabbit

Clonality: Polyclonal

Isotype: IgG

Applications: WB (1:500-2000)

Reactivity: Human (predicted: Mouse, Rabbit, Pig, Sheep, Cow, Chicken, Dog, Horse)

Predicted MW: 94 kDa

Subcellular: Nucleus

Locations:

Entrez Gene: 10600

Swiss Prot: Q9Y5T5

Source: KLH conjugated synthetic peptide derived from human USP16: 381-480/823.

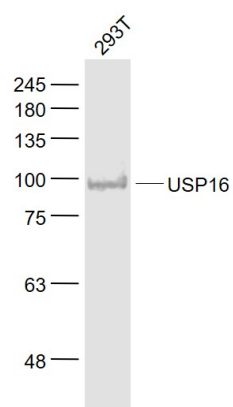
Purification: affinity purified by Protein A

Storage: 0.01M TBS (pH7.4) with 1% BSA, 0.02% Proclin300 and 50% Glycerol.

Shipped at 4°C. Store at -20°C for one year. Avoid repeated freeze/thaw cycles.

Background: This gene encodes a deubiquitinating enzyme that is phosphorylated at the onset of mitosis and then dephosphorylated at the metaphase/anaphase transition. It can deubiquitinate H2A, one of two major ubiquitinated proteins of chromatin, in vitro and a mutant form of the protein was shown to block cell division. Alternate transcriptional splice variants, encoding different isoforms, have been characterized. [provided by RefSeq, Jul 2008]

VALIDATION IMAGES



Sample: 293T(Human) Cell Lysate at 30 ug Primary: Anti- USP16 (bs-13829R) at 1/1000 dilution Secondary: IRDye800CW Goat Anti-Rabbit IgG at 1/20000 dilution Predicted band size: 94 kD Observed band size: 94 kD