

bs-7693R**[Primary Antibody]****BioSS**
ANTIBODIES

www.bioss.com.cn

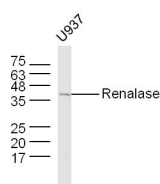
sales@bioss.com.cn

techsupport@bioss.com.cn

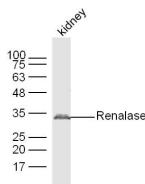
400-901-9800

Renalase Rabbit pAb**— DATASHEET —**

Host: Rabbit Clonality: Polyclonal GeneID: 55328 Target: Renalase Immunogen: KLH conjugated synthetic peptide derived from human Renalase: 201-300/342. Purification: affinity purified by Protein A Concentration: 1mg/ml Storage: 0.01M TBS (pH7.4) with 1% BSA, 0.02% Proclin300 and 50% Glycerol. Shipped at 4°C. Store at -20°C for one year. Avoid repeated freeze/thaw cycles. Background: Renalase, a novel FAD dependent amine oxidase, is secreted by the kidney, degrades circulating catecholamines, and modulates cardiac function and lowers systemic blood pressure. In vivo, it has been found to decrease cardiac contractility and heart rate and prevents a compensatory increase in peripheral vascular tone, possibly explaining the association between increased plasma catecholamines and heightened cardiovascular risk. The plasma concentration of renalase is markedly reduced in patients with end-stage renal disease, as compared with healthy subjects. The administration of renalase (or renalase mimics) may offer a new approach to the treatment of hypertension commonly found in renal disease, which is associated with a marked increase in cardiovascular disease.	Isotype: IgG SWISS: Q5VYX0	Applications: WB (1:500-2000) Reactivity: Human, Mouse (predicted: Rat, Rabbit, Pig, Dog, Horse) Predicted MW.: 36 kDa Subcellular Location: Secreted
--	---	---

— VALIDATION IMAGES —

Sample: U937 Cell (Human) Lysate at 40 ug
 Primary: Anti-Renalase (bs-7693R) at 1/300 dilution
 Secondary: IRDye800CW Goat Anti-Rabbit IgG at 1/20000 dilution
 Predicted band size: 36 kD
 Observed band size: 36 kD



Sample: Kidney (Mouse) Lysate at 40 ug
 Primary: Anti-Renalase (bs-7693R) at 1/300 dilution
 Secondary: IRDye800CW Goat Anti-Rabbit IgG at 1/20000 dilution
 Predicted band size: 36 kD
 Observed band size: 35 kD