

bs-25183R**[Primary Antibody]****WNT7A Rabbit pAb****Bioss**
ANTIBODIES

www.bioss.com.cn

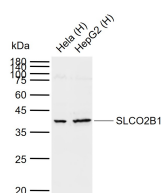
sales@bioss.com.cn

techsupport@bioss.com.cn

400-901-9800

— DATASHEET —

Host: Rabbit	Isotype: IgG	Applications: WB (1:500-2000)
Clonality: Polyclonal		Reactivity: Human (predicted: Mouse, Rat, Pig, Cow, Chicken, Horse)
GeneID: 7476	SWISS: O00755	Predicted MW.: 41 kDa
Target: WNT7A		Subcellular Location: Secreted ,Extracellular matrix
Immunogen: KLH conjugated synthetic peptide derived from human WNT7A: 201-300/349.		
Purification: affinity purified by Protein A		
Concentration: 1mg/ml		
Storage: 0.01M TBS (pH7.4) with 1% BSA, 0.02% Proclin300 and 50% Glycerol. Shipped at 4°C. Store at -20°C for one year. Avoid repeated freeze/thaw cycles.		
Background: Ligand for members of the frizzled family of seven transmembrane receptors. Probable developmental protein. Signaling by Wnt-7a allows sexually dimorphic development of the mullerian ducts.		

— VALIDATION IMAGES —

Sample: Lane 1: Human Hela cell lysates Lane 2: Human HepG2 cell lysates
Primary: Anti-SLCO2B1 (bs-25183R) at 1/1000 dilution
Secondary: IRDye800CW Goat Anti-Rabbit IgG at 1/20000 dilution
Predicted band size: 39 kDa
Observed band size: 39 kDa