

bs-25177R**[Primary Antibody]****ZCWCC1 Rabbit pAb****Bioss**
ANTIBODIES

www.bioss.com.cn

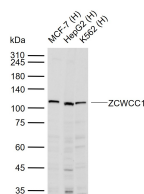
sales@bioss.com.cn

techsupport@bioss.com.cn

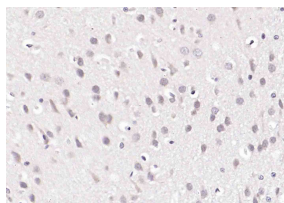
400-901-9800

— DATASHEET —

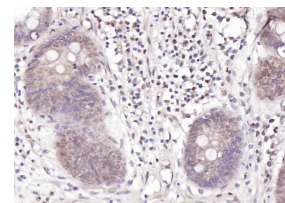
Host: Rabbit	Isotype: IgG	Applications: WB (1:500-2000) IHC-P (1:100-500) IHC-F (1:400-800) IF (1:100-500)
Clonality: Polyclonal		
GeneID: 22880	SWISS: Q9Y6X9	
Target: ZCWCC1		
Immunogen: KLH conjugated synthetic peptide derived from human ZCWCC1: 691-790/1032.		Reactivity: Human, Rat (predicted: Mouse)
Purification: affinity purified by Protein A		
Concentration: 1mg/ml		Predicted MW.: 118 kDa
Storage: 0.01M TBS (pH7.4) with 1% BSA, 0.02% Proclin300 and 50% Glycerol. Shipped at 4°C. Store at -20°C for one year. Avoid repeated freeze/thaw cycles.		Subcellular Location: Cytoplasm ,Nucleus
Background: The CW domain is a structural module found in many vertebrate, parasitic and plant proteins. It consists of a mononuclear four-cysteine zinc-finger domain that plays a role in DNA binding, chromatin methylation and early embryonic development. ZCWCC1 (zinc finger CW-type coiled-coil domain protein 1), also known as MORC2 (MORC family CW-type zinc finger protein 2) or ZCW3, is a 1,032 amino acid protein that contains one CW-type zinc finger domain. ZCWCC1 is located on chromosome 22 and is ubiquitously expressed with highest expression in pancreas, smooth muscle and testis. Expression of ZCWCC1 is upregulated in hypoxia, a pathological condition characterized by an inadequate supply of oxygen in the blood.		

— VALIDATION IMAGES —

Sample: Lane 1: Human MCF-7 cell lysates Lane 2: Human HepG2 cell lysates Lane 3: Human K562 cell lysates Primary: Anti-ZCWCC1 (bs-25177R) at 1/1000 dilution Secondary: IRDye800CW Goat Anti-Rabbit IgG at 1/20000 dilution Predicted band size: 118 kDa Observed band size: 115 kDa



Paraformaldehyde-fixed, paraffin embedded (rat brain); Antigen retrieval by boiling in sodium citrate buffer (pH6.0) for 15min; Block endogenous peroxidase by 3% hydrogen peroxide for 20 minutes; Blocking buffer (normal goat serum) at 37°C for 30min; Incubation with (ZCWCC1) Polyclonal Antibody, Unconjugated (bs-25177R) at 1:200 overnight at 4°C, followed by operating according to SP Kit(Rabbit) (sp-0023) instructions and DAB staining.



Paraformaldehyde-fixed, paraffin embedded (human colon carcinoma); Antigen retrieval by boiling in sodium citrate buffer (pH6.0) for 15min; Block endogenous peroxidase by 3% hydrogen peroxide for 20 minutes; Blocking buffer (normal goat serum) at 37°C for 30min; Incubation with (ZCWCC1) Polyclonal Antibody, Unconjugated (bs-25177R) at 1:200 overnight at 4°C, followed by operating according to SP Kit(Rabbit) (sp-0023) instructions and DAB staining.