

bs-13745R

[Primary Antibody]

CLDN25 Rabbit pAb

Bioss
ANTIBODIES

www.bioss.com.cn

sales@bioss.com.cn

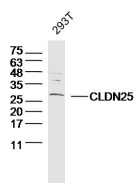
techsupport@bioss.com.cn

400-901-9800

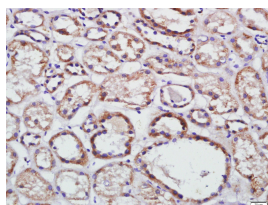
— DATASHEET —

Host: Rabbit	Isotype: IgG	Applications: WB (1:500-2000) IHC-P (1:100-500) IHC-F (1:100-500) IF (1:100-500) Reactivity: Human (predicted: Dog, Horse) Predicted MW.: 25 kDa Subcellular Location: Cell membrane
Clonality: Polyclonal		
GeneID: 644672	SWISS: C9JDP6	
Target: CLDN25		
Immunogen: KLH conjugated synthetic peptide derived from human CLDN25: 101-200/229.		
Purification: affinity purified by Protein A		
Concentration: 1mg/ml		
Storage: 0.01M TBS (pH7.4) with 1% BSA, 0.02% Proclin300 and 50% Glycerol. Shipped at 4°C. Store at -20°C for one year. Avoid repeated freeze/thaw cycles.		
Background: Plays a major role in tight junction-specific obliteration of the intercellular space, through calcium-independent cell-adhesion activity.		

— VALIDATION IMAGES —



Sample: 293T (human) cell Lysate at 40 ug
Primary: Anti-CLDN25(bs-13745R) at 1/300 dilution
Secondary: IRDye800CW Goat Anti-Rabbit IgG at 1/20000 dilution
Predicted band size: 25kD
Observed band size: 28 kD



Tissue/cell: human kidney tissue; 4% Paraformaldehyde-fixed and paraffin-embedded; Antigen retrieval: citrate buffer (0.01M, pH 6.0), Boiling bathing for 15min; Block endogenous peroxidase by 3% Hydrogen peroxide for 30min; Blocking buffer (normal goat serum, C-0005) at 37°C for 20 min; Incubation: Anti-CLDN25 Polyclonal Antibody, Unconjugated(bs-13745R) 1:500, overnight at 4°C, followed by conjugation to the secondary antibody(SP-0023) and DAB(C-0010) staining