

bs-15359R**[Primary Antibody]****GPR125 Rabbit pAb****BioSS**
ANTIBODIES

www.bioss.com.cn

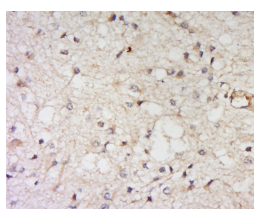
sales@bioss.com.cn

techsupport@bioss.com.cn

400-901-9800

— DATASHEET —

Host: Rabbit	Isotype: IgG	Applications: IHC-P (1:100-500)
Clonality: Polyclonal		IHC-F (1:100-500)
GeneID: 166647	SWISS: Q8IWK6	IF (1:100-500)
Target: GPR125		Reactivity: Human (predicted: Mouse, Rat, Sheep, Cow, Dog, Horse)
Immunogen: KLH conjugated synthetic peptide derived from human GPR125: 351-450/1321. < Extracellular >		Predicted MW.: 142 kDa
Purification: affinity purified by Protein A		Subcellular Location: Cell membrane
Concentration: 1mg/ml		
Storage: 0.01M TBS (pH7.4) with 1% BSA, 0.02% Proclin300 and 50% Glycerol. Shipped at 4°C. Store at -20°C for one year. Avoid repeated freeze/thaw cycles.		
Background: GPR125 is an orphan receptor which has a leucine rich repeat (LRR), an immunoglobulin (Ig) domain, and a hormone-binding domain (HBD). The Ig domain shows similarities to motilin and tinitin, while the LRR domain shows similarities to LRIG1 and SLIT1-2. ESTs have been isolated primarily from amnion, connective tissue, ear, embryo, eye, ganglion, heart, lung, placenta, and skin libraries.		

— VALIDATION IMAGES —

Tissue/cell: Human brain gliomas; 4%
Paraformaldehyde-fixed and paraffin-embedded; Antigen retrieval: citrate buffer (0.01M, pH 6.0), Boiling bathing for 15min; Block endogenous peroxidase by 3% Hydrogen peroxide for 30min; Blocking buffer (normal goat serum, C-0005) at 37°C for 20 min; Incubation: Anti-GPR125 Polyclonal Antibody, Unconjugated (bs-15359R) 1:200, overnight at 4°C, followed by conjugation to the secondary antibody (SP-0023) and DAB (C-0010) staining