

bs-25159R**[Primary Antibody]****phospho-PIN1(Ser71) Rabbit pAb****BioSS**
ANTIBODIES

www.bioss.com.cn

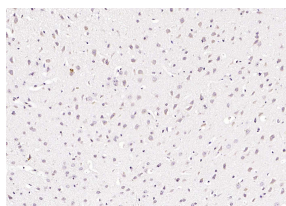
sales@bioss.com.cn

techsupport@bioss.com.cn

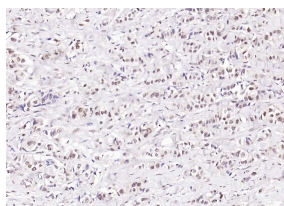
400-901-9800

— DATASHEET —

Host: Rabbit	Isotype: IgG	Applications: IHC-P (1:100-500) IHC-F (1:400-800) IF (1:100-500)
Clonality: Polyclonal		
GeneID: 5300	SWISS: Q13526	
Target: PIN1(Ser71)		Reactivity: Human, Mouse, Rat (predicted: Pig, Sheep, Cow, Dog, Horse)
Immunogen: KLH conjugated synthesised phosphopeptide derived from human Pin1 around the phosphorylation site of Ser71: RP(p-S)SW.		
Purification: affinity purified by Protein A		Predicted MW.: 18 kDa
Concentration: 1mg/ml		Subcellular Location: Cytoplasm ,Nucleus
Storage: 0.01M TBS (pH7.4) with 1% BSA, 0.02% Proclin300 and 50% Glycerol. Shipped at 4°C. Store at -20°C for one year. Avoid repeated freeze/thaw cycles.		
Background: Pin1 is a Peptidyl-prolyl isomerases (PPIase). Peptidyl-prolyl isomerases (PPIase) facilitate the cis-trans interconversion of the peptidyl-prolyl bond thereby affecting protein folding. Pin1 is a PPIase which specifically recognizes phosphorylated S/T-P bonds. Pin1 has been implicated in tau pathologies that underlie Alzheimer's Disease. Pin1 binds to tau phosphorylated specifically on the Thr231-Pro site and induces conformational changes in tau. Such conformational changes can directly restore the ability of phosphorylated Tau to bind microtubules and promote microtubule assembly and/or facilitate tau dephosphorylation. Pin1 expression inversely correlates with the predicted neuronal vulnerability in normally aged brain and also with actual neurofibrillary degeneration in AD brain. Pin1 could be pivotal for maintenance of normal neuronal function and preventing age-dependent neurodegeneration.		

— VALIDATION IMAGES —

Paraformaldehyde-fixed, paraffin embedded (mouse brain); Antigen retrieval by boiling in sodium citrate buffer (pH6.0) for 15min; Block endogenous peroxidase by 3% hydrogen peroxide for 20 minutes; Blocking buffer (normal goat serum) at 37°C for 30min; Incubation with (Phospho-PIN1(Ser71)) Polyclonal Antibody, Unconjugated (bs-25159R) at 1:200 overnight at 4°C, followed by operating according to SP Kit(Rabbit) (sp-0023) instructions and DAB staining.



Paraformaldehyde-fixed, paraffin embedded (human breast carcinoma); Antigen retrieval by boiling in sodium citrate buffer (pH6.0) for 15min; Block endogenous peroxidase by 3% hydrogen peroxide for 20 minutes; Blocking buffer (normal goat serum) at 37°C for 30min; Incubation with (Phospho-PIN1(Ser71)) Polyclonal Antibody, Unconjugated (bs-25159R) at 1:200 overnight at 4°C, followed by operating according to SP Kit(Rabbit) (sp-0023) instructions and DAB staining.