

**bs-25130R****[ Primary Antibody ]****CD33 Rabbit pAb****BioSS**  
**ANTIBODIES**

www.bioss.com.cn

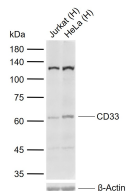
sales@bioss.com.cn

techsupport@bioss.com.cn

400-901-9800

**— DATASHEET —**

<b>Host:</b> Rabbit	<b>Isotype:</b> IgG	<b>Applications:</b> WB (1:500-2000)
<b>Clonality:</b> Polyclonal		
<b>GeneID:</b> 945	<b>SWISS:</b> P20138	
<b>Target:</b> CD33		
<b>Immunogen:</b> KLH conjugated synthetic peptide derived from human CD33: 71-170/364.		
<b>Purification:</b> affinity purified by Protein A		<b>Reactivity:</b> Human
<b>Concentration:</b> 1mg/ml		
<b>Storage:</b> 0.01M TBS (pH7.4) with 1% BSA, 0.02% Proclin300 and 50% Glycerol. Shipped at 4°C. Store at -20°C for one year. Avoid repeated freeze/thaw cycles.		<b>Predicted MW.:</b> 40 kDa
<b>Background:</b> Enables protein phosphatase binding activity and sialic acid binding activity. Involved in several processes, including negative regulation of cytokine production; negative regulation of monocyte activation; and positive regulation of protein tyrosine phosphatase activity. Located in several cellular components, including Golgi apparatus; external side of plasma membrane; and peroxisome. [provided by Alliance of Genome Resources, Apr 2022]		<b>Subcellular Location:</b> Cell membrane

**— VALIDATION IMAGES —**

Sample: Lane 1: Human Jurkat cell lysates Lane 2: Human HeLa cell lysates Primary: Anti-CD33 (bs-25130R) at 1/1000 dilution Secondary: IRDye800CW Goat Anti-Rabbit IgG at 1/20000 dilution Predicted band size: kDa Observed band size: 62 kDa