

bs-8877R**[Primary Antibody]****Bioss**
ANTIBODIES

www.bioss.com.cn

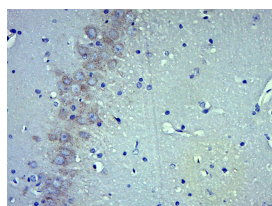
sales@bioss.com.cn

techsupport@bioss.com.cn

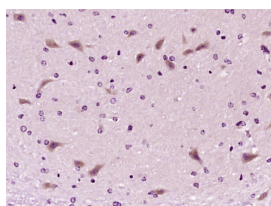
400-901-9800

Somatostatin 28 Rabbit pAb**— DATASHEET —**

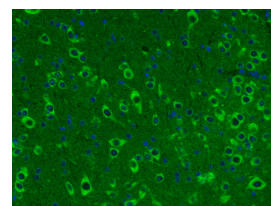
Host: Rabbit	Isotype: IgG	Applications: IHC-P (1:100-500) IHC-F (1:100-500) IF (1:200-800) Reactivity: Mouse, Rat (predicted: Human, Rabbit, Pig, Cow, Dog, Horse) Predicted MW.: 13 kDa Subcellular Location: Secreted
Clonality: Polyclonal		
GeneID: 6750	SWISS: P61278	
Target: Somatostatin 28		
Immunogen: KLH conjugated synthetic peptide derived from human Somatostatin 28: 51-116/116.		
Purification: affinity purified by Protein A		
Concentration: 1mg/ml		
Storage: 0.01M TBS (pH7.4) with 1% BSA, 0.02% Proclin300 and 50% Glycerol. Shipped at 4°C. Store at -20°C for one year. Avoid repeated freeze/thaw cycles.		
Background: Somatostatin is a regulatory hormone that is expressed throughout the body and inhibits the release of numerous secondary hormones by binding to high-affinity G protein-coupled somatostatin receptors. This cyclic tetradecapeptide inhibits the secretion of many important hormones, including somatotropin (also designated growth hormone, or GH), insulin and glucagon. Somatostatin is found in both the hypothalamus and pancreas. Somatostatin is thought to be involved in the regulation of insulin synthesis. The hormone somatostatin has active 14 amino acid and 28 amino acid forms that are produced by alternate cleavage of the single preproprotein encoded by this gene. In the cerebellum, Somatostatin-14 and Somatostatin-28 are highly expressed at birth and in the adult stage, respectively. Somatostatin affects rates of neurotransmission in the central nervous system and proliferation of both normal and tumorigenic cells. The gene encoding Somatostatin maps to human chromosome 3q28.		

— VALIDATION IMAGES —

Paraformaldehyde-fixed, paraffin embedded (Rat brain); Antigen retrieval by boiling in sodium citrate buffer (pH6.0) for 15min; Block endogenous peroxidase by 3% hydrogen peroxide for 20 minutes; Blocking buffer (normal goat serum) at 37°C for 30min; Antibody incubation with (Somatostatin 28) Polyclonal Antibody, Unconjugated (bs-8877R) at 1:400 overnight at 4°C, followed by operating according to SP Kit(Rabbit) (sp-0023) instructions and DAB staining.



Paraformaldehyde-fixed, paraffin embedded (Mouse brain); Antigen retrieval by boiling in sodium citrate buffer (pH6.0) for 15min; Block endogenous peroxidase by 3% hydrogen peroxide for 20 minutes; Blocking buffer (normal goat serum) at 37°C for 30min; Antibody incubation with (Somatostatin 28) Polyclonal Antibody, Unconjugated (bs-8877R) at 1:400 overnight at 4°C, followed by operating according to SP Kit(Rabbit) (sp-0023) instructions and DAB staining.



Paraformaldehyde-fixed, paraffin embedded (Mouse brain); Antigen retrieval by boiling in sodium citrate buffer (pH6.0) for 15min; Block endogenous peroxidase by 3% hydrogen peroxide for 20 minutes; Blocking buffer (normal goat serum) at 37°C for 30min; Antibody incubation with (Somatostatin 28) Polyclonal Antibody, Unconjugated (bs-8877R) at 1:400 overnight at 4°C, followed by a conjugated Goat Anti-Rabbit IgG antibody (bs-0295G-FITC) for 90 minutes, and DAPI for nuclei staining.

— SELECTED CITATIONS —

- **[IF=6.709]** Erika L Galer. et al. Cervical epidural electrical stimulation increases respiratory activity through somatostatin-expressing neurons in the dorsal cervical spine in rats. J NEUROSCI. 2022 Dec;: IF ;Rat. 36639888

Important Note: This product as supplied is intended for research use only, not for use in human, therapeutic or diagnostic applications.