

bs-13533R**[Primary Antibody]****GPR35 Rabbit pAb****BioSS**
ANTIBODIES

www.bioss.com.cn

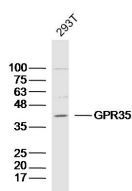
sales@bioss.com.cn

techsupport@bioss.com.cn

400-901-9800

— DATASHEET —

Host: Rabbit	Isotype: IgG	Applications: WB (1:500-2000)
Clonality: Polyclonal		Reactivity: Human
GeneID: 2859	SWISS: Q9HC97	
Target: GPR35		
Immunogen: KLH conjugated synthetic peptide derived from human GPR35: 1-100/309. < Extracellular >		Predicted MW.: 34 kDa
Purification: affinity purified by Protein A		Subcellular Location: Cell membrane
Concentration: 1mg/ml		
Storage: 0.01M TBS (pH7.4) with 1% BSA, 0.02% Proclin300 and 50% Glycerol. Shipped at 4°C. Store at -20°C for one year. Avoid repeated freeze/thaw cycles.		
Background: G protein-coupled receptors (GPRs), also known as seven transmembrane receptors, heptahelical receptors or 7TM receptors, comprise a superfamily of proteins that play a role in many different stimulus-response pathways. G protein coupled receptors translate extracellular signals into intracellular signals (G protein activation) and they respond to a variety of signaling molecules, such as hormones and neurotransmitters. GPR35 (G protein-coupled receptor 35) is a 309 amino acid multi-pass membrane protein that belongs to the G-protein coupled receptor 1 family. Expressed in adult and fetal tissues, including lung, pancreas, colon and intestine, GPR35 functions as an orphan receptor that is thought to play a role in signaling events throughout the cell.		

— VALIDATION IMAGES —

Sample: 293T Cell (Human) Lysate at 30 ug
Primary: Anti- GPR35 (bs-13533R) at 1/300
dilution Secondary: IRDye800CW Goat Anti-
Rabbit IgG at 1/20000 dilution Predicted band
size: 34kD Observed band size: 39kD