

bs-13530R**[Primary Antibody]****GPR31 Rabbit pAb****BioSS**
ANTIBODIES

www.bioss.com.cn

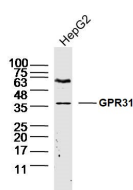
sales@bioss.com.cn

techsupport@bioss.com.cn

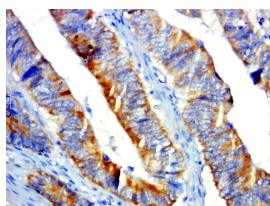
400-901-9800

— DATASHEET —

Host: Rabbit	Isotype: IgG	Applications: WB (1:500-2000)
Clonality: Polyclonal		IHC-P (1:100-500)
GeneID: 2853	SWISS: O00270	IHC-F (1:100-500)
Target: GPR31		IF (1:100-500)
Immunogen: KLH conjugated synthetic peptide derived from human G protein coupled receptor 31: 121-220/319. < Extracellular >		Reactivity: Human
Purification: affinity purified by Protein A		
Concentration: 1mg/ml		Predicted MW.: 35 kDa
Storage: 0.01M TBS (pH7.4) with 1% BSA, 0.02% Proclin300 and 50% Glycerol. Shipped at 4°C. Store at -20°C for one year. Avoid repeated freeze/thaw cycles.		Subcellular Location: Cell membrane
Background: Enables G protein-coupled receptor activity and arachidonic acid binding activity. Involved in G protein-coupled receptor signaling pathway and response to acidic pH. Located in plasma membrane. [provided by Alliance of Genome Resources, Apr 2022]		

— VALIDATION IMAGES —

Sample: HepG2 (human) Cell Lysate at 40 ug
 Primary: Anti-GPR31 (bs-13530R) at 1/300
 dilution Secondary: IRDye800CW Goat Anti-Rabbit IgG at 1/20000 dilution Predicted band size: 35 kD Observed band size: 36 kD



Paraformaldehyde-fixed, paraffin embedded (human colon cancer); Antigen retrieval by boiling in sodium citrate buffer (pH6.0) for 15min; Block endogenous peroxidase by 3% hydrogen peroxide for 20 minutes; Blocking buffer (normal goat serum) at 37°C for 30min; Antibody incubation with (GPR31) Polyclonal Antibody, Unconjugated (bs-13530R) at 1:500 overnight at 4°C, followed by a conjugated secondary (sp-0023) for 20 minutes and DAB staining.

— SELECTED CITATIONS —

- **[IF=2.9]** Mohamed Moustafa. et al. 12-HETE activates Müller glial cells: the potential role of GPR31 and miR-29. PROSTAG OTH LIPID M. 2023 Dec;;106805 IF ;Mouse. 38141777