

**bs-13522R****[ Primary Antibody ]****GPR4 Rabbit pAb****BioSS**  
**ANTIBODIES**

www.bioss.com.cn

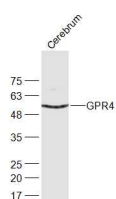
sales@bioss.com.cn

techsupport@bioss.com.cn

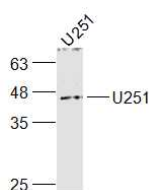
400-901-9800

**DATASHEET**

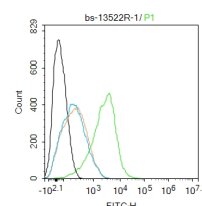
<b>Host:</b> Rabbit	<b>Isotype:</b> IgG	<b>Applications:</b> WB (1:500-2000) <b>Flow-Cyt</b> (1ug/Test)
<b>Clonality:</b> Polyclonal		<b>Reactivity:</b> Human, Mouse
<b>GeneID:</b> 2828	<b>SWISS:</b> P46093	
<b>Target:</b> GPR4		
<b>Immunogen:</b> KLH conjugated synthetic peptide derived from human G protein coupled receptor 4: 201-300/362. < Extracellular >		
<b>Purification:</b> affinity purified by Protein A		
<b>Concentration:</b> 1mg/ml		
<b>Storage:</b> 0.01M TBS (pH7.4) with 1% BSA, 0.02% Proclin300 and 50% Glycerol. Shipped at 4°C. Store at -20°C for one year. Avoid repeated freeze/thaw cycles.		
<b>Background:</b> · Enables G protein-coupled receptor activity. Involved in several processes, including G protein-coupled receptor signaling pathway; positive regulation of Rho protein signal transduction; and response to acidic pH. Located in plasma membrane. [provided by Alliance of Genome Resources, Apr 2022]		
		<b>Predicted MW.:</b> 41 kDa
		<b>Subcellular Location:</b> Cell membrane

**VALIDATION IMAGES**

Sample: Cerebrum (Mouse) Lysate at 40 ug  
 Primary: Anti-GPR4 (bs-13522R) at 1/300 dilution  
 Secondary: IRDye800CW Goat Anti-Rabbit IgG at 1/20000 dilution Predicted band size: 41 kD  
 Observed band size: 51 kD



Sample: U251(Human) Cell Lysate at 30 ug  
 Primary: Anti-GPR4 (bs-13522R) at 1/1000 dilution Secondary: IRDye800CW Goat Anti-Rabbit IgG at 1/20000 dilution Predicted band size: 41 kD Observed band size: 43 kD



Blank control:U937. Primary Antibody (green line): Rabbit Anti-GPR4 antibody (bs-13522R) Dilution: 1ug/Test; Secondary Antibody : Goat anti-rabbit IgG-FITC Dilution: 0.5ug/Test. Protocol The cells were incubated in 5%BSA to block non-specific protein-protein interactions for 30 min at room temperature .Cells stained with Primary Antibody for 30 min at room temperature. The secondary antibody used for 40 min at room temperature. Acquisition of 20,000 events was performed.

**SELECTED CITATIONS**

- **[IF=4.253]** Hande Parlak. et al. Adropin increases with swimming exercise and exerts a protective effect on the brain of aged rats. EXP GERONTOL. 2022 Oct;;111972 IHC ;Rat. 36216130