

bs-21283R

[Primary Antibody]

SLC39A13 Rabbit pAb

BioSS
ANTIBODIES

www.bioss.com.cn

sales@bioss.com.cn

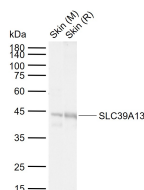
techsupport@bioss.com.cn

400-901-9800

— DATASHEET —

Host: Rabbit	Isotype: IgG	Applications: WB (1:500-2000)
Clonality: Polyclonal		
GeneID: 91252	SWISS: Q96H72	Reactivity: Mouse, Rat (predicted: Human)
Target: SLC39A13		Predicted MW.: 39 kDa
Immunogen: KLH conjugated synthetic peptide derived from human SLC39A13: 1-100/371. < Cytoplasmic >		Subcellular Location: Cell membrane
Purification: affinity purified by Protein A		
Concentration: 1mg/ml		
Storage: Preservative: 0.02% Proclin300, Constituents: 1% BSA, 0.01M PBS, pH7.4. Shipped at 4°C. Store at -20°C for one year. Avoid repeated freeze/thaw cycles.		
Background: This gene encodes a member of the LIV-1 subfamily of the ZIP transporter family. The encoded transmembrane protein functions as a zinc transporter. Mutations in this gene have been associated with the spondylocheiro dysplastic form of Ehlers-Danlos syndrome.[provided by RefSeq, Mar 2010]		

— VALIDATION IMAGES —



Sample: Lane 1: Mouse Skin tissue lysates Lane
2: Rat Skin tissue lysates Primary: Anti-SLC39A13
(bs-21283R) at 1/1000 dilution Secondary:
IRDye800CW Goat Anti-Rabbit IgG at 1/20000
dilution Predicted band size: 39 kDa Observed
band size: 42 kDa